

YY1AP1 Polyclonal Antibody

Catalog number: 10425-1-AP

Size: 22 µg/150 µl

Source: Rabbit

Isotype: IgG

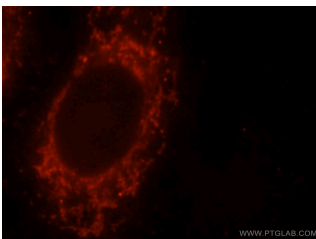
Synonyms:

YY1AP1; FLJ10875, FLJ13914,

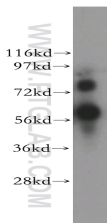
HCCA1, HCCA2, YAP, YY1

associated protein 1, YY1AP,

YY1AP1



Immunofluorescent analysis of HepG2 cells, using YY1AP1 antibody 10425-1-AP at 1:25 dilution and Rhodamine-labeled goat anti-rabbit IgG (red).



MDA-MB-231 cells were subjected to SDS PAGE followed by western blot with 10425-1-AP(YY1AP1 antibody) at dilution of 1:800

Background

YY1AP1 (YY1 associated protein 1), also known as HCCA2 (hepatocellular carcinoma-associated protein 2) or YY1AP, is a 796 amino acid protein that localizes to both the nucleus and the cytoplasm and exists as seven alternatively spliced isoforms. We detected 75 kDa and 50 kDa two isoforms. YY1AP1 is expressed ubiquitously with notable expression in lung, brain, spleen, pancreas, small intestine, heart, colon and skeletal muscle, YY1AP1 interacts with and enhances the transcriptional activation activity of YY1. YY1AP1 is expressed at high levels in liver carcinomas, suggesting a role in tumor transformation and metastasis. YY1AP1 may play a role in cell cycle regulation.

Applications

Tested applications:	ELISA, IF, WB
Species specificity:	Human; other species not tested.
Calculated YY1AP1 MW:	75 kDa
Observed YY1AP1 MW:	75 kDa and 50 kDa
Positive WB detected in	MDA-MB-231 cells
Positive IF detected in	HepG2 cells
Recommended dilution:	WB: 1:200-1:2000 IF: 1:10-1:100

Application key: WB = Western blotting, IHC = Immunohistochemistry, IF = Immunofluorescence, IP = Immunoprecipitation

Immunogen information

Immunogen:	Ag0692
GenBank accession number:	BC003500
Gene ID (NCBI):	55249
Full name:	YY1 associated protein 1

Product information

Purification method:	Antigen affinity purification
Storage:	PBS with 0.1% sodium azide and 50% glycerol pH 7.3. Store at -20°C.