

GSTM1 Polyclonal Antibody

Catalog number: 12412-1-AP

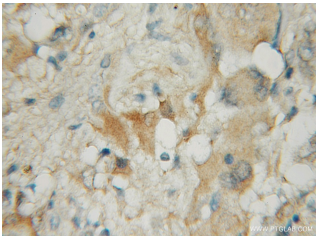
Size: 30 µg/150 µl

Source: Rabbit

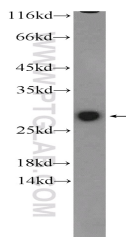
Isotype: IgG

Synonyms:

GSTM1; glutathione S transferase mu 1, GST class mu 1, GST HB subunit 4, GST1, GSTM1, GSTM1 1, GSTM1a 1a, GSTM1b 1b, GTH4, GTM1, H B, MU, MU 1



Immunohistochemical of paraffin-embedded human gliomas using 12412-1-AP(GSTM1 antibody) at dilution of 1:50 (under 10x lens)



mouse ovary tissue were subjected to SDS PAGE followed by western blot with 12412-1-AP(GSTM1 antibody) at dilution of 1:500

Applications

Tested applications:	ELISA, WB, IHC
Cited applications:	WB
Species specificity:	Human, Mouse; other species not tested.
Cited species:	Mouse
Calculated GSTM1 MW:	181aa,21 kDa
Observed GSTM1 MW:	27 kDa
Positive WB detected in	Mouse ovary tissue, HeLa cells, mouse kidney tissue, mouse liver tissue
Positive IHC detected in	Human gliomas tissue
Recommended dilution:	WB: 1:200-1:2000 IHC: 1:20-1:200

Application key: WB = Western blotting, IHC = Immunohistochemistry, IF = Immunofluorescence, IP = Immunoprecipitation

Immunogen information

Immunogen:	Ag3113
GenBank accession number:	BC024005
Gene ID (NCBI):	2944
Full name:	Glutathione S-transferase mu 1

Product information

Purification method:	Antigen affinity purification
Storage:	PBS with 0.1% sodium azide and 50% glycerol pH 7.3. Store at -20°C.