

MTMR4 Polyclonal Antibody

Catalog number: 13488-1-AP

Size: 23 µg/150 µl

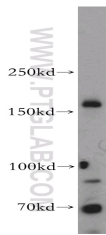
Source: Rabbit

Isotype: IgG

Synonyms:

MTMR4; FYVE-DSP2;

KIAA0647; ZFYVE11



mouse colon tissue were subjected to SDS PAGE followed by western blot with 13488-1-AP(MTMR4 Antibody) at dilution of 1:1000

Applications

Tested applications:	ELISA, WB
Species specificity:	Human, mouse, rat; other species not tested.
Positive WB detected in:	Mouse colon tissue, HepG2 cells, mouse kidney tissue
Calculated MTMR4 MW:	1195aa,133kd
Observed MTMR4 MW:	140-160kd
Recommended dilution:	WB: 1:500-1:5000

Application key: WB = Western blotting, IHC = Immunohistochemistry, IF = Immunofluorescence, IP = Immunoprecipitation, FC = Flow cytometry

Immunogen information

Immunogen:	Ag4310
GenBank accession number:	BC035609
Gene ID (NCBI):	9110
Full name:	Myotubularin related protein 4

Product information

Purification method:	Antigen affinity purification
Storage:	PBS with 0.02% sodium azide and 50% glycerol pH 7.3. Store at -20°C.