

CSPP1 Polyclonal Antibody

Catalog number: 11931-1-AP

Size: 59 µg/150 µl

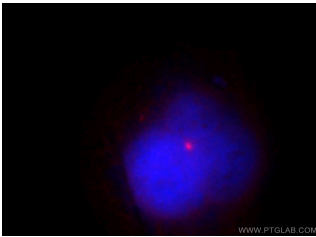
Source: Rabbit

Isotype: IgG

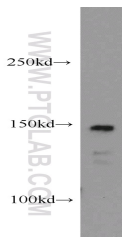
Synonyms:

CSPP1; CSPP, CSPP1, FLJ22490,

FLJ38886



Immunofluorescent analysis of HeLa cells, using CSPP1 antibody 11931-1-AP at 1:25 dilution and Rhodamine-labeled goat anti-rabbit IgG (red). Blue pseudocolor = DAPI (fluorescent DNA dye).



Jurkat cells were subjected to SDS PAGE followed by western blot with 11931-1-AP (CSPP1 antibody) at dilution of 1:200

Background

CSPP1 interacts with centrosomes and microtubules and plays a role in cell-cycle progression and spindle organization. CSPP1 is required for their common C-terminal domain to interact with Nephrocystin 8 (NPHP8/RPGRIP1L) and to form a ternary complex with NPHP8 and NPHP4, and for ciliogenesis in hTERT-RPE1 cells in vitro and are expressed in ciliated renal, retinal, and respiratory cells in vivo

Applications

Tested applications:	ELISA, WB, IF
Cited applications:	IF, IHC, IP, WB
Species specificity:	Human, Mouse, Rat; other species not tested.
Cited species:	Human, mouse
Calculated CSPP1 MW:	141 kDa
Observed CSPP1 MW:	141kd
Positive WB detected in	Jurkat cells, HEK-293 cells, HeLa cells, mouse testis tissue, rat testis tissue
Positive IF detected in	Hela cells
Recommended dilution:	WB: 1:200-1:2000 IF: 1:10-1:100

Application key: WB = Western blotting, IHC = Immunohistochemistry, IF = Immunofluorescence, IP = Immunoprecipitation

Immunogen information

Immunogen:	Ag2521
GenBank accession number:	BC029445
Gene ID (NCBI):	79848
Full name:	Centrosome and spindle pole associated protein 1

Product information

Purification method:	Antigen affinity purification
Storage:	PBS with 0.1% sodium azide and 50% glycerol pH 7.3. Store at -20°C.