

MAT1A Polyclonal Antibody

Catalog number: 12395-1-AP

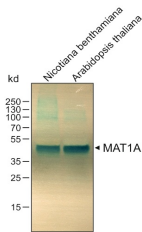
Size: 23 µg/150 µl

Source: Rabbit

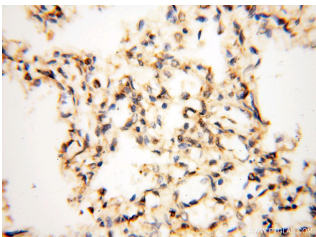
Isotype: IgG

Synonyms:

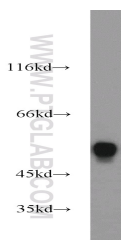
MAT1A; AdoMet synthase 1,
AMS1, MAT, MAT 1, MAT I/III,
MAT1A, MATA1, SAMS, SAMS1



WB result of MAT1A antibody (12395-1-AP, 1:5000) with plant leaf tissue samples.



Immunohistochemical of paraffin-embedded human lung using 12395-1-AP (MAT1A antibody) at dilution of 1:200 (under 40x lens)



mouse liver tissue were subjected to SDS PAGE followed by western blot with 12395-1-AP (MAT1A antibody) at dilution of 1:1000

Background

Methionine adenosyltransferase (MAT) is the enzyme that catalyzes the synthesis of S-adenosylmethionine (AdoMet), the main donor of methyl groups in the cell. In mammals MAT is encoded by two different genes, MAT1A and MAT2A. MAT1A is expressed only in the mature liver whereas fetal hepatocytes, extrahepatic tissues and liver cancer cells express MAT2A. This antibody was raised against the full length of human MAT1A and may cross-react with MAT2A. Western blot analysis using this antibody detected a single band around 44-50kD in liver.

Applications

Tested applications:	ELISA, WB, IHC
Cited applications:	WB
Species specificity:	Human, Mouse, Rat; other species not tested.
Cited species:	Human, mouse, rat
Calculated MAT1A MW:	395aa, 44 kDa
Observed MAT1A MW:	44-55kD
Positive WB detected in	Mouse liver tissue, Arabidopsis whole plant, HepG2 cells
Positive IHC detected in	Human lung tissue
Recommended dilution:	WB: 1:1000-1:10000 IHC: 1:20-1:200

Application key: WB = Western blotting, IHC = Immunohistochemistry, IF = Immunofluorescence, IP = Immunoprecipitation

Immunogen information

Immunogen:	Ag3076
GenBank accession number:	BC018359
Gene ID (NCBI):	4143
Full name:	Methionine adenosyltransferase I, alpha

Product information

Purification method:	Antigen affinity purification
Storage:	PBS with 0.1% sodium azide and 50% glycerol pH 7.3. Store at -20°C.