

SMC6 Polyclonal Antibody

Catalog number: 14465-1-AP

Size: 71 µg/150 µl

Source: Rabbit

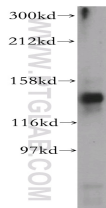
Isotype: IgG

Synonyms:

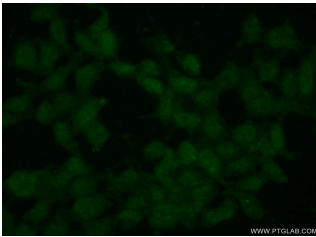
SMC6; FLJ22116, FLJ35534,

hSMC6, SMC 6, SMC protein 6,

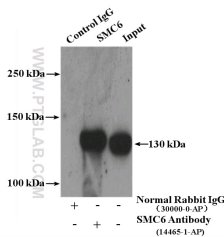
SMC6, SMC6L1



mouse testis tissue were subjected to SDS PAGE followed by western blot with 14465-1-AP(SMC6 antibody) at dilution of 1:500



Immunofluorescent analysis of (10% Formaldehyde) fixed HEK-293 cells using 14465-1-AP(SMC6 Antibody) at dilution of 1:50 and Alexa Fluor 488-conjugated AffiniPure Goat Anti-Rabbit IgG(H+L)



IP Result of anti-SMC6 (IP:14465-1-AP, 4µg; Detection:14465-1-AP 1:1000) with mouse testis tissue lysate 4000µg.

Applications

| | |
|--------------------------|--|
| Tested applications: | ELISA, WB, IP, IF |
| Species specificity: | Human, Mouse, Rat; other species not tested. |
| Calculated SMC6 MW: | 126 kDa |
| Observed SMC6 MW: | 130 kDa |
| Positive WB detected in: | Mouse testis tissue, HEK-293 cells |
| Positive IP detected in: | Mouse testis tissue |
| Positive IF detected in: | HEK-293 cells |
| Recommended dilution: | WB: 1:500-1:5000 |
| | IP: 1:500-1:5000 |
| | IF: 1:50-1:500 |

Application key: WB = Western blotting, IHC = Immunohistochemistry, IF = Immunofluorescence, IP = Immunoprecipitation

Immunogen information

| | |
|---------------------------|---|
| Immunogen: | Ag5812 |
| GenBank accession number: | BC039828 |
| Gene ID (NCBI): | 79677 |
| Full name: | Structural maintenance of chromosomes 6 |

Product information

| | |
|----------------------|--|
| Purification method: | Antigen affinity purification |
| Storage: | PBS with 0.02% sodium azide and 50% glycerol pH 7.3. Store at -20°C. |