

LRR 1 Polyclonal Antibody

Catalog number: 11628-1-AP

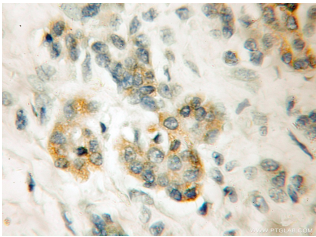
Size: 20 µg/150 µl

Source: Rabbit

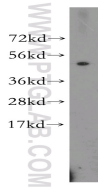
Isotype: IgG

Synonyms:

PPIL5; 4 1BBLRR, LRR 1, LRR repeat protein 1, LRR1, PPIL5



Immunohistochemical of paraffin-embedded human pancreas cancer using 11628-1-AP (PPIL5 antibody) at dilution of 1:50 (under 10x lens)



U-937 cells were subjected to SDS PAGE followed by western blot with 11628-1-AP (PPIL5 antibody) at dilution of 1:300

Applications

Tested applications:	ELISA, WB, IHC
Species specificity:	Human, Mouse, Rat; other species not tested.
Calculated LRR 1 MW:	46.7kd
Observed LRR 1 MW:	47kd
Positive WB detected in:	U-937 cells
Positive IHC detected in:	Human pancreas cancer tissue
Recommended dilution:	WB: 1:500 - 1:2000 IHC: 1:25 - 1:100

Application key: WB = Western blotting, IHC = Immunohistochemistry, IF = Immunofluorescence, IP = Immunoprecipitation

Immunogen information

Immunogen:	Ag2159
GenBank accession number:	BC030142
Gene ID (NCBI):	122769
Full name:	Peptidylprolyl isomerase (cyclophilin)-like 5

Product information

Purification method:	Antigen affinity purification
Storage:	PBS with 0.1% sodium azide and 50% glycerol pH 7.3. Store at -20°C.