

LHX4 Polyclonal Antibody

Catalog number: 11183-1-AP

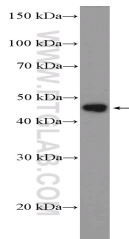
Size: 35 µg/150 µl

Source: Rabbit

Isotype: IgG

Synonyms:

LHX4; Gsh 4, Gsh4, LHX4, LIM
homeobox 4, LIM homeobox
protein 4, LIM/homeobox
protein Lhx4



HepG2 cells were subjected to SDS
PAGE followed by western blot with
11183-1-AP(LHX4 Antibody) at
dilution of 1:300

Applications

Tested applications:	ELISA, WB
Species specificity:	Human,Mouse,Rat; other species not tested.
Calculated LHX4 MW:	43 kDa
Observed LHX4 MW:	43-47 kDa
Positive WB detected in	HepG2 cells
Recommended dilution:	WB: 1:200-1:1000

Application key: WB = Western blotting, IHC = Immunohistochemistry, IF = Immunofluorescence, IP = Immunoprecipitation

Immunogen information

Immunogen:	Ag1642
GenBank accession number:	BC011759
Gene ID (NCBI):	89884
Full name:	LIM homeobox 4

Product information

Purification method:	Antigen affinity purification
Storage:	PBS with 0.1% sodium azide and 50% glycerol pH 7.3. Store at -20°C.