

## IFT88 Polyclonal Antibody

Catalog number: 13967-1-AP

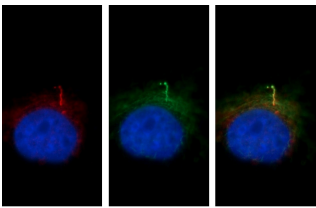
Size: 40 µg/150 µl

Source: Rabbit

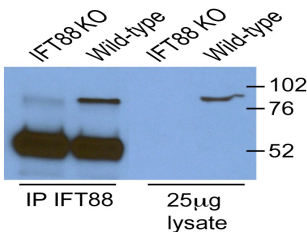
Isotype: IgG

Synonyms:

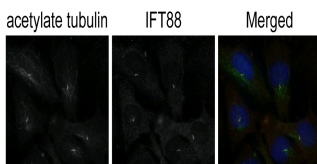
IFT88; IFT88, TPR repeat protein 10, TTC10



Immunofluorescent images of MDCK cells stained with IFT88 rabbit pAb (13967-1-AP) and acetylated tubulin mouse mAb (66200-1-Ig) at dilution of 1:50, further stained with Alexa Fluor 594-conjugated AffiniPure Goat Anti-Rabbit IgG(H+L) for 13967-1-AP, and Alexa Fluor 488-conjugated AffiniPure Goat anti-Mouse IgG(H+L) for 66200-1-Ig.

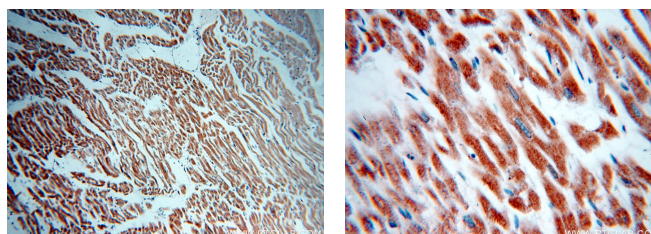
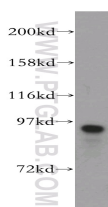


IP and WB result of IFT88(13967-1-AP) from Dr. Corbit, Kevin. Knockout cells and WT cells.



Dr. Andrew Kodani, Reiter Lab UCSF

IF result of anti-IFT88(13967-1-AP) from Dr. Corbit, Kevin.



### Background

Intraflagellar transport (IFT), mediated by molecular motors and IFT particles, is an important transport process that occurs in the cilium and has been shown to be essential for the assembly and maintenance of cilia and flagella in many organisms. IFT88 (intraflagellar transport protein 88; also known as TG737 or TTC10) is a component of IFT particles and required for cilium biogenesis. Defects in IFT88/Tg737 lead to polycystic kidney disease (11062270). IFT88 localizes to spindle poles during mitosis and is required for spindle orientation in mitosis (21441926). This antibody was raised against the C-terminal region of human IFT88 and can detect the endogenous level of IFT88.

### Applications

Tested applications:	ELISA, WB, IP, IHC, IF
Cited applications:	IF, WB
Species specificity:	Human, Mouse, Rat, Dog; other species not tested.
Cited species:	Canine, dog, human, mouse, rat, zebrafish
Calculated IFT88 MW:	94 kDa
Observed IFT88 MW:	88-95 kDa
Positive WB detected in	HEK-293 cells, A549 cells, HepG2 cells, Jurkat cells, K-562 cells, mouse brain tissue, mouse eye tissue, mouse kidney tissue, mouse testis tissue, mouse thymus tissue, NIH/3T3 cells
Positive IP detected in	Knockout cells and WT cells, HEK-293 cells
Positive IHC detected in	Human heart tissue, human pancreas tissue
Positive IF detected in	MDCK cells, hTERT-RPE1 cells
Recommended dilution:	WB: 1:200-1:2000 IP: 1:200-1:2000 IHC: 1:20-1:200 IF: 1:20-1:200

Application key: WB = Western blotting, IHC = Immunohistochemistry, IF = Immunofluorescence, IP = Immunoprecipitation

### Immunogen information

Immunogen:	Ag4980
GenBank accession number:	BC030776
Gene ID (NCBI):	8100
Full name:	Intraflagellar transport 88 homolog (Chlamydomonas)

### Product information

Purification method:	Antigen affinity purification
Storage:	PBS with 0.02% sodium azide and 50% glycerol pH 7.3. Store at -20°C.

**HEK-293 cells were subjected to SDS PAGE followed by western blot with 13967-1-AP(IF88 antibody) at dilution of 1:1000**

**Immunohistochemical of paraffin-embedded human heart using 13967-1-AP(IF88 antibody) at dilution of 1:50 (under 10x lens)**

**Immunohistochemical of paraffin-embedded human heart using 13967-1-AP(IF88 antibody) at dilution of 1:50 (under 40x lens)**