

EIF2A Polyclonal Antibody

Catalog number: 11233-1-AP

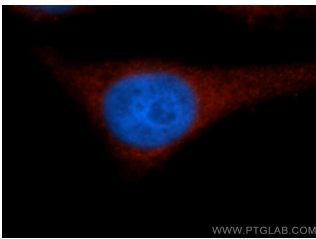
Size: 51 µg/150 µl

Source: Rabbit

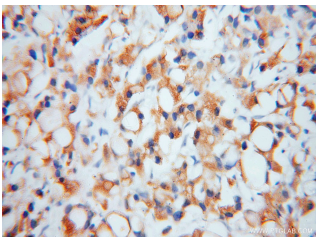
Isotype: IgG

Synonyms:

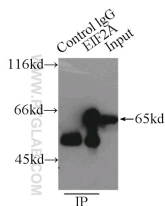
EIF2A; CDA02, EIF 2A, EIF2A, MST089, MSTP004, MSTP089



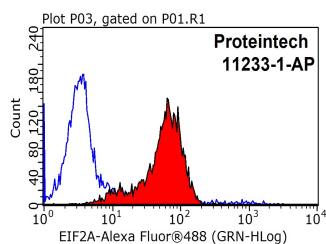
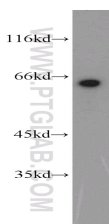
Immunofluorescent analysis of HepG2 cells, using EIF2A antibody 11233-1-AP at 1:50 dilution and Rhodamine-labeled goat anti-rabbit IgG (red). Blue pseudocolor = DAPI (fluorescent DNA dye).



Immunohistochemical of paraffin-embedded human prostate cancer using 11233-1-AP(EIF2A antibody) at dilution of 1:50 (under 40x lens)



IP Result of anti-EIF2A (IP:11233-1-AP, 3µg; Detection:11233-1-AP 1:1000) with MCF-7 cells lysate 3250µg.



HepG2 cells were subjected to 1X10⁶ HepG2 cells were

Background

EIF2A, also named as CDA02, MSTP004 and MSTP089, belongs to the WD repeat EIF2A family. It functions in the early steps of protein synthesis of a small number of specific mRNAs. EIF2A, an alternative initiator tRNA-binding protein, has a key role in the translation of HCV mRNA during HCV infection, in turn promoting eIF2a phosphorylation by activating the eIF2a kinase PKR. This antibody is a rabbit polyclonal antibody raised against residues near the C terminus of human EIF2A, recognizes specifically the 65kd EIF2A protein.

Applications

Tested applications:	ELISA, WB, IHC, IP, IF, FC
Cited applications:	IF, WB
Species specificity:	Human, Mouse, Rat; other species not tested.
Cited species:	Human, mouse, rat
Calculated EIF2A MW:	65 kDa
Observed EIF2A MW:	65 kDa
Positive WB detected in	HepG2 cells, HeLa cells, MCF7 cells, MDA-MB-453s cells, mouse pancreas tissue, PC-3 cells, Raji cells
Positive IP detected in	MCF-7 cells
Positive IHC detected in	Human prostate cancer tissue, human pancreas tissue
Positive IF detected in	HepG2 cells, Ethacrynic acid treated HepG2 cells
Positive FC detected in	HepG2 cells
Recommended dilution:	WB: 1:500-1:5000
	IP: 1:500-1:5000
	IHC: 1:20-1:200
	IF: 1:20-1:200
	FC: N/A

Application key: WB = Western blotting, IHC = Immunohistochemistry, IF = Immunofluorescence, IP = Immunoprecipitation

Immunogen information

Immunogen:	Ag1753
GenBank accession number:	BC011885
Gene ID (NCBI):	83939
Full name:	Eukaryotic translation initiation factor 2A, 65kDa

Product information

Purification method:	Antigen affinity purification
Storage:	PBS with 0.1% sodium azide and 50% glycerol pH 7.3. Store at -20°C.

SDS PAGE followed by western blot with 11233-1-AP(EIF2A antibody) at dilution of 1:300

stained with .2ug EIF2A antibody (11233-1-AP, red) and control antibody (blue). Fixed with 90% MeOH blocked with 3% BSA (30 min). Alexa Fluor 488-conjugated AffiniPure Goat Anti-Rabbit IgG(H+L) with dilution 1:1000.