

## CBX3 Polyclonal Antibody

Catalog number: 11650-2-AP

Size: 43 µg/150 µl

Source: Rabbit

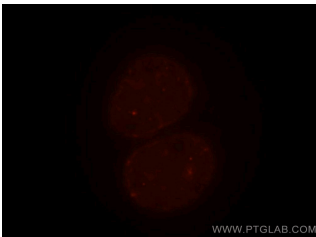
Isotype: IgG

Synonyms:

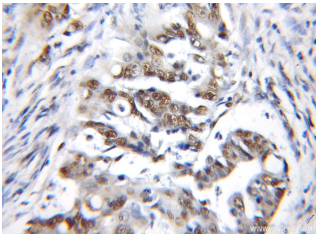
CBX3; CBX3, Chromobox protein homolog 3, HECH, HP1

GAMMA, HP1Hs gamma,

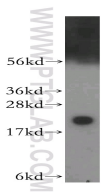
Modifier 2 protein



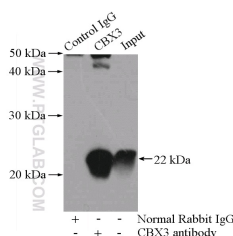
Immunofluorescent analysis of HepG2 cells, using CBX3 antibody 11650-2-AP at 1:50 dilution and Rhodamine-labeled goat anti-rabbit IgG (red).



Immunohistochemical of paraffin-embedded human colon cancer using 11650-2-AP (CBX3 antibody) at dilution of 1:100 (under 10x lens)



HeLa cells were subjected to SDS PAGE followed by western blot with 11650-2-AP (CBX3 antibody) at dilution of 1:500



IP Result of anti-CBX3

### Background

The family of Heterochromatin protein 1 (HP1) proteins is a family of highly conserved heterochromatin-associated non-histone chromosomal proteins, which has important functions in nucleus. These functions include gene activation or repression, regulation of binding of cohesion complexes to centromere, sequestration of genes to nuclear periphery, and heterochromatin formation and propagation. Much evidence shows that HP1 proteins interact with numerous proteins including methylated histones, histone methyltransferases and so on. CBX3 is one of the paralogues of HP1 proteins

### Applications

Tested applications:	ELISA, WB, IHC, IF, IP
Cited applications:	IF, IHC, WB
Species specificity:	Human, Mouse, Rat; other species not tested.
Cited species:	Human
Calculated CBX3 MW:	21 kDa
Observed CBX3 MW:	22 kDa
Positive WB detected in	HeLa cells, A375 cells, mouse spleen tissue
Positive IP detected in	Mouse spleen tissue
Positive IHC detected in	Human colon cancer tissue
Positive IF detected in	HepG2 cells
Recommended dilution:	WB: 1:1000-1:10000
	IP: 1:200-1:2000
	IHC: 1:20-1:200
	IF: 1:20-1:200

Application key: WB = Western blotting, IHC = Immunohistochemistry, IF = Immunofluorescence, IP = Immunoprecipitation

### Immunogen information

Immunogen:	Ag2251
GenBank accession number:	BC000954
Gene ID (NCBI):	11335
Full name:	Chromobox homolog 3 (HP1 gamma homolog, Drosophila)

### Product information

Purification method:	Antigen affinity purification
Storage:	PBS with 0.1% sodium azide and 50% glycerol pH 7.3. Store at -20°C.

(IP:11650-2-AP, 4ug;  
Detection:11650-2-AP 1:500)  
with mouse spleen tissue  
lysate 4000ug.