

Carboxypeptidase A6 Polyclonal Antibody

Catalog number: 13604-1-AP

Size: 20 µg/150 µl

Source: Rabbit

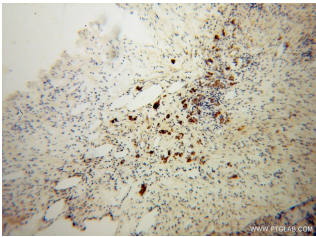
Isotype: IgG

Synonyms:

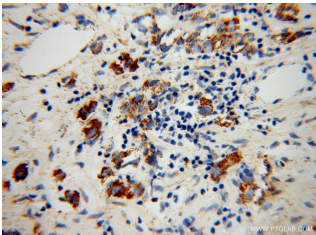
CPA6; Carboxypeptidase A6,

Carboxypeptidase B, CPA6,

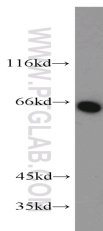
CPAH



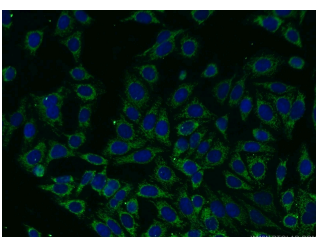
Immunohistochemical of paraffin-embedded human gliomas using 13604-1-AP (CPA6 antibody) at dilution of 1:100 (under 10x lens)



Immunohistochemical of paraffin-embedded human gliomas using 13604-1-AP (CPA6 antibody) at dilution of 1:100 (under 40x lens)



HepG2 cells were subjected to SDS PAGE followed by western blot with 13604-1-AP (CPA6 antibody) at dilution of 1:500



Immunofluorescent analysis of HepG2 cells using 13604-1-

Background

Carboxypeptidase A6 is an extracellular matrixbound metalloproteinase (CP) that has been implicated in Duane syndrome, a neurodevelopmental disorder in which the lateral rectus extraocular muscle is not properly innervated. Consistent with a role in Duane syndrome, CPA6 is expressed in a number of chondrocytic and nervous tissues during embryogenesis. It has three isoforms. The product recognizes the C-terminal of this protein.

Applications

| | |
|------------------------------------|---|
| Tested applications: | ELISA, WB, IHC, IF |
| Species specificity: | Human, Mouse, Rat; other species not tested. |
| Calculated Carboxypeptidase A6 MW: | 437aa, 51 kDa |
| Observed Carboxypeptidase A6 MW: | 65 kDa or 51 kDa |
| Positive WB detected in | HepG2 cells, mouse brain tissue |
| Positive IHC detected in | Human gliomas tissue |
| Positive IF detected in | HepG2 cells |
| Recommended dilution: | WB: 1:200-1:2000 IHC: 1:20-1:200 IF: 1:10-1:100 |

Application key: WB = Western blotting, IHC = Immunohistochemistry, IF = Immunofluorescence, IP = Immunoprecipitation

Immunogen information

| | |
|---------------------------|---------------------|
| Immunogen: | Ag4466 |
| GenBank accession number: | BC033684 |
| Gene ID (NCBI): | 57094 |
| Full name: | Carboxypeptidase A6 |

Product information

| | |
|----------------------|--|
| Purification method: | Antigen affinity purification |
| Storage: | PBS with 0.02% sodium azide and 50% glycerol pH 7.3. Store at -20°C. |

**AP(CPA6 Antibody) at
dilution of 1:25 and Alexa
Fluor 488-conjugated
AffiniPure Goat Anti-Rabbit
IgG(H+L)**