

CLEC2D Polyclonal Antibody

Catalog number: 13188-1-AP

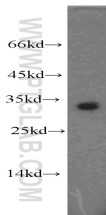
Size: 30 µg/150 µl

Source: Rabbit

Isotype: IgG

Synonyms:

CLEC2D; CLAX, CLEC2D, Lectin like NK cell receptor, Lectin like transcript 1, LLT 1, LLT1, OCIL, Osteoclast inhibitory lectin



Jurkat cells were subjected to SDS PAGE followed by western blot with 13188-1-AP(CLEC2D antibody) at dilution of 1:500

Background

CLEC2D (C-type lectin domain family 2 member D), also known as LLT1 (lectin-like transcript 1) or OCIL (Osteoclast inhibitory lectin), is a single-pass type II membrane protein expressed by hematopoietic cells and osteoblasts (PMID: 21930700; 14753741). Its expression was found to be tightly correlated with activation on T cells, NK cells, B cells, and DCs (PMID: 21930700). CLEC2D is a ligand for the human NKR-P1A (CD161) receptor and that their interaction differentially regulates NK- and T-cell functions (PMID: 16339513, 16339512). It inhibits the formation and function of osteoclasts and modulates the release of interferon-gamma by human NK cells (PMID:14753741; 20415786).

Applications

| | |
|-------------------------|----------------------------------|
| Tested applications: | ELISA, WB |
| Species specificity: | Human; other species not tested. |
| Calculated CLEC2D MW: | 154aa,18kd |
| Observed CLEC2D MW: | 33 kDa |
| Positive WB detected in | Jurkat cells |
| Recommended dilution: | WB: 1:200-1:2000 |

Application key: WB = Western blotting, IHC = Immunohistochemistry, IF = Immunofluorescence, IP = Immunoprecipitation

Immunogen information

| | |
|---------------------------|---|
| Immunogen: | Ag3862 |
| GenBank accession number: | BC019883 |
| Gene ID (NCBI): | 29121 |
| Full name: | C-type lectin domain family 2, member D |

Product information

| | |
|----------------------|---|
| Purification method: | Antigen affinity purification |
| Storage: | PBS with 0.1% sodium azide and 50% glycerol pH 7.3. Store at -20°C. |