

## SAMHD1 Polyclonal Antibody

Catalog number: 12586-1-AP

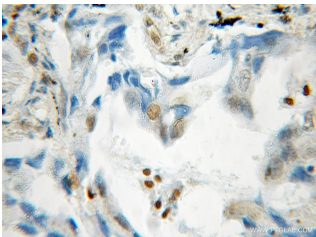
Size: 20 µg/150 µl

Source: Rabbit

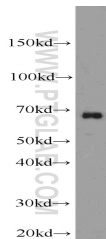
Isotype: IgG

Synonyms:

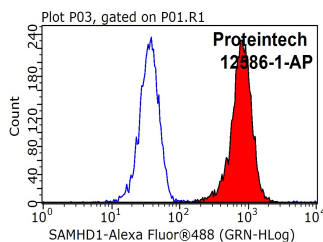
SAMHD1; DCIP, HDDC1,  
Monocyte protein 5, MOP 5,  
MOP5, SAM domain and HD  
domain 1, SAMHD1, SBB188



Immunohistochemical of paraffin-embedded human lung cancer using 12586-1-AP (SAMHD1 antibody) at dilution of 1:50 (under 40x lens)



HepG2 cells were subjected to SDS PAGE followed by western blot with 12586-1-AP (SAMHD1 antibody) at dilution of 1:1000



1X10<sup>6</sup> K-562 cells were stained with 0.2 µg SAMHD1 antibody (12586-1-AP, red) and control antibody (blue). Fixed with 90% MeOH blocked with 3% BSA (30 min). Alexa Fluor 488-conjugated AffiniPure Goat Anti-Rabbit IgG(H+L) with dilution 1:1000.

### Background

SAMHD1, highly expressed by monocytes and monocyte-derived dendritic cells and by monocyte-derived macrophages at a lower extent, is reported as an HIV-1 restriction factor that inhibits the early step of the HIV-1 life cycle. Vpx (virus-like particles containing viral protein X) could overcome this block by interacting with SAMHD1, inducing proteasome-dependent degradation of SAMHD1. Mutations in SAMHD1 cause Aicardi-Goutières syndrome, a genetic encephalopathy with a presumed immune pathogenesis. This antibody 12586-1-AP is raised against N-terminal 314 amino acids of the full length SAMHD1.

### Applications

Tested applications:	ELISA, WB, IHC, IP, FC, IF
Cited applications:	FC, IF, IHC, IP, WB
Species specificity:	Human, Mouse, Rat; other species not tested.
Cited species:	Human, monkey
Calculated SAMHD1 MW:	626aa, 72 kDa
Observed SAMHD1 MW:	64-72 kDa
Positive WB detected in	HepG2 cells, human brain tissue, human heart tissue, K-562 cells, L02 cells, mouse heart tissue
Positive IP detected in	K-562 cells
Positive IHC detected in	Human lung cancer tissue, human colon cancer tissue
Positive IF detected in	HepG2 cells
Positive FC detected in	K-562 cells
Recommended dilution:	WB: 1:500-1:5000 IP: 1:200-1:1000 IHC: 1:20-1:200 IF: 1:50-1:500 FC: N/A

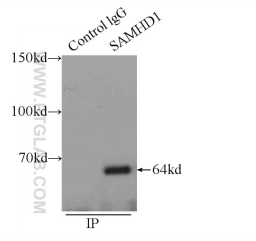
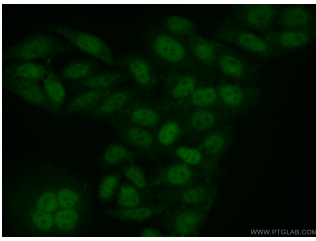
Application key: WB = Western blotting, IHC = Immunohistochemistry, IF = Immunofluorescence, IP = Immunoprecipitation

### Immunogen information

Immunogen:	Ag3287
GenBank accession number:	BC036450
Gene ID (NCBI):	25939
Full name:	SAM domain and HD domain 1

### Product information

Purification method:	Antigen affinity purification
Storage:	PBS with 0.1% sodium azide and 50% glycerol pH 7.3. Store at -20°C.



**Immunofluorescent analysis of ( 10% Formaldehyde ) fixed HepG2 cells using 12586-1-AP( SAMHD1 Antibody) at dilution of 1:50 and Alexa Fluor 488-conjugated AffiniPure Goat Anti-Rabbit IgG(H+L)**

**IP Result of anti-SAMHD1 (IP:12586-1-AP, 3ug; Detection:12586-1-AP 1:300) with K-562 cells lysate 2400ug.**