

PPP2R2B Polyclonal Antibody

Catalog number: 13123-1-AP

Size: 21 µg/150 µl

Source: Rabbit

Isotype: IgG

Synonyms:

PPP2R2B; B55 BETA, FLJ95686,

PP2A B55BETA, PP2A PR55B,

PP2A subunit B isoform beta,

PP2A subunit B isoform R2

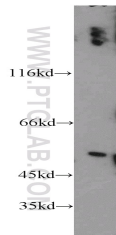
beta, PP2AB BETA, PP2APR55

BETA, PPP2R2B, PR2AB BETA,

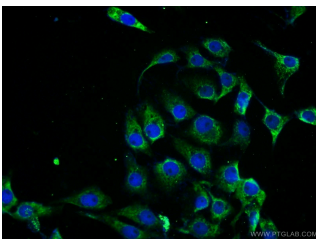
PR2AB55 BETA, PR2APR55

BETA, PR52B, PR55 BETA,

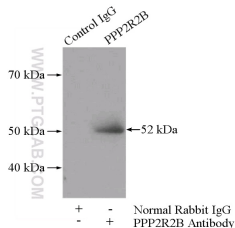
SCA12



SH-SY5Y cells were subjected to SDS PAGE followed by western blot with 13123-1-AP(PPP2R2B antibody) at dilution of 1:500



Immunofluorescent analysis of SH-SY5Y cells using 13123-1-AP(PPP2R2B Antibody) at dilution of 1:25 and Alexa Fluor 488-conjugated AffiniPure Goat Anti-Rabbit IgG(H+L)



IP Result of anti-PPP2R2B (IP:13123-1-AP, 4ug; Detection:13123-1-AP 1:500) with SH-SY5Y cells lysate 1200ug.

Background

The PPP2R2B gene encodes a deduced 443-amino acid protein of approximately 52 kDa, which is a brain-specific regulatory subunit B of protein phosphatase 2. PPP2R2B is a Subunit of PP2A, a highly conserved constitutive enzyme (PMID:11719278). PPP2R2B (Bβ) is an important regulator of protein phosphatase 2A (PP2A) activity in the brain. Through differential promoter usage and alternative splicing, two major isoforms Bβ1 and Bβ2 with divergent sub-cellular targeting N termini are produced. Bβ plays an important role in neuronal survival. (BioFormosa (2009) 44(2): 77-84). It has 5 isoforms produced by alternative splicing.

Applications

Tested applications:	ELISA, WB, IF, IP
Species specificity:	Human, Mouse, Rat; other species not tested.
Calculated PPP2R2B MW:	443aa, 52 kDa
Observed PPP2R2B MW:	52 kDa
Positive WB detected in	SH-SY5Y cells, MCF7 cells
Positive IP detected in	SH-SY5Y cells
Positive IF detected in	SH-SY5Y cells
Recommended dilution:	WB: 1:200-1:2000
	IP: 1:200-1:2000
	IF: 1:10-1:100

Application key: WB = Western blotting, IHC = Immunohistochemistry, IF = Immunofluorescence, IP = Immunoprecipitation

Immunogen information

Immunogen:	Ag3860
GenBank accession number:	BC031790
Gene ID (NCBI):	5521
Full name:	Protein phosphatase 2 (formerly 2A), regulatory subunit B, beta isoform

Product information

Purification method:	Antigen affinity purification
Storage:	PBS with 0.1% sodium azide and 50% glycerol pH 7.3. Store at -20°C.