

SIGLEC6 Polyclonal Antibody

Catalog number: 13454-1-AP

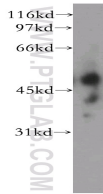
Size: 20 µg/150 µl

Source: Rabbit

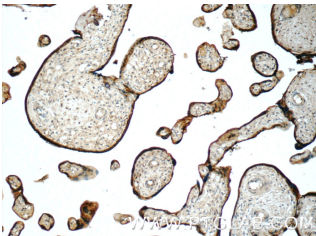
Isotype: IgG

Synonyms:

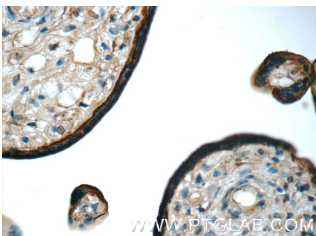
SIGLEC6; CD327, CD33 antigen like 1, CD33L, CD33L1, CDw327, OB BP1, OBBP1, Obesity binding protein 1, SIGLEC 6, SIGLEC6



human serum tissue were subjected to SDS PAGE followed by western blot with 13454-1-AP(SIGLEC6 antibody) at dilution of 1:300



Immunohistochemistry of paraffin-embedded human placenta tissue slide using 13454-1-AP(SIGLEC6 Antibody) at dilution of 1:50 (under 10x lens)



Immunohistochemistry of paraffin-embedded human placenta tissue slide using 13454-1-AP(SIGLEC6 Antibody) at dilution of 1:50 (under 40x lens)

Applications

Tested applications:	ELISA, WB, IHC
Species specificity:	Human; other species not tested.
Calculated SIGLEC6 MW:	426aa,47 kDa
Observed SIGLEC6 MW:	49kd
Positive WB detected in	Human serum tissue
Positive IHC detected in	Human placenta tissue
Recommended dilution:	WB: 1:500-1:5000 IHC: 1:20-1:200

Application key: WB = Western blotting, IHC = Immunohistochemistry, IF = Immunofluorescence, IP = Immunoprecipitation

Immunogen information

Immunogen:	Ag4281
GenBank accession number:	BC035359
Gene ID (NCBI):	946
Full name:	Sialic acid binding Ig-like lectin 6

Product information

Purification method:	Antigen affinity purification
Storage:	PBS with 0.02% sodium azide and 50% glycerol pH 7.3. Store at -20°C.