

## ***S. aureus* PVL Luk-S polyclonal Antibody**

**Catalog #:** 04-0009

**Lot #:** 04-0009-L01

**Immunogen:** Purified Pantone-Valentine Leukocidin, Luk-S subunit, expressed in *E.coli* (His-tagged).

**Description:** Rabbit polyclonal reactive to *Staphylococcus aureus* Luk-S. The antibody detects the antigen produced by *S. aureus* strains in western blot and ELISA and neutralizes the cytolytic activity of Pantone Valentine Leukocidin (PVL : Luk-S+Luk-F).

**Raised in:** New Zealand White Rabbits

**Purification:** Protein A

**Clonality:** Polyclonal

**Buffer:** PBS + 0.01% Sodium Azide

**Size:** 0.5mg

**Relevance:** The antibody can be used for detection and neutralization of PVL Luk-S produced by PVL-producing virulent strains of *S. aureus* such as CA-MRSA USA300.

### **Recommended Dilutions:**

**ELISA:** Assay-dependent dilution

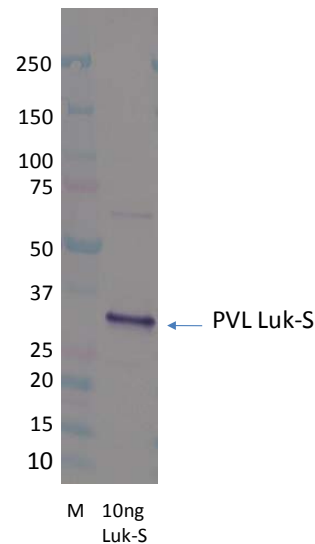
**WB:** Assay-dependent dilution; if probing against purified protein, at least 10 ng of pure toxin can be detected with 0.5 ug/ml of the primary antibody combined with a suitable dilution of a secondary anti-rabbit antibody.

**Toxin neutralization:** Using a neutrophil lysis assay, 62.5 µg/ml of this antibody inhibits 100% of the lytic activity of 0.1 µg/ml of PVL.

**IF:** Not tested

**Storage:** 2-3 weeks +4°C, -20°C long term

**Cross Reactivity:** unknown.



### **Western Blot analysis of PVL Luk-S**

**Antigen:** Purified Luk-S

**Primary Antibody:** Rabbit anti Luk-S pAbs (0.5ug/ml)

**Secondary Antibody:** Goat anti rabbit-AP (1:3,000)

**Intended for research use only, not for human, therapeutic, or diagnostic applications.**