

## ILVBL Polyclonal Antibody

Catalog number: 11220-1-AP

Size: 20 µg/150 µl

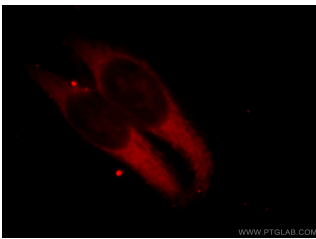
Source: Rabbit

Isotype: IgG

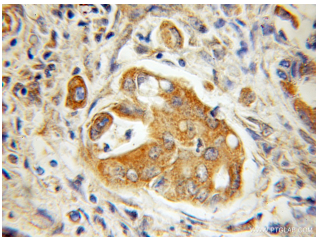
Synonyms:

ILVBL; 209L8, AHAS, FLJ39061,

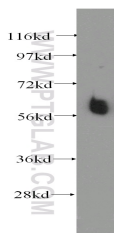
ILV2H, IlvB like protein, ILVBL



Immunofluorescent analysis of HeLa cells, using ILVBL antibody 11220-1-AP at 1:25 dilution and Rhodamine-labeled goat anti-rabbit IgG (red).



Immunohistochemical of paraffin-embedded human colon cancer using 11220-1-AP (ILVBL antibody) at dilution of 1:100 (under 10x lens)



human thyroid gland tissue were subjected to SDS PAGE followed by western blot with 11220-1-AP (ILVBL antibody) at dilution of 1:500

### Applications

Tested applications:	ELISA, WB, IHC, IF
Species specificity:	Human, Mouse, Rat; other species not tested.
Calculated ILVBL MW:	68 kDa
Observed ILVBL MW:	60-65 kDa
Positive WB detected in	Human thyroid gland tissue, human adrenal gland tissue
Positive IHC detected in	Human colon cancer tissue
Positive IF detected in	Hela cells
Recommended dilution:	WB: 1:500-1:5000 IHC: 1:20-1:200 IF: 1:10-1:100

Application key: WB = Western blotting, IHC = Immunohistochemistry, IF = Immunofluorescence, IP = Immunoprecipitation

### Immunogen information

Immunogen:	Ag1729
GenBank accession number:	BC011761
Gene ID (NCBI):	10994
Full name:	IlvB (bacterial acetolactate synthase)-like

### Product information

Purification method:	Antigen affinity purification
Storage:	PBS with 0.1% sodium azide and 50% glycerol pH 7.3. Store at -20°C.