

ALDOA Polyclonal Antibody

Catalog number: 11217-1-AP

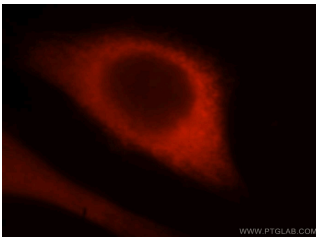
Size: 20 µg/150 µl

Source: Rabbit

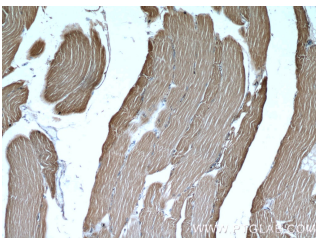
Isotype: IgG

Synonyms:

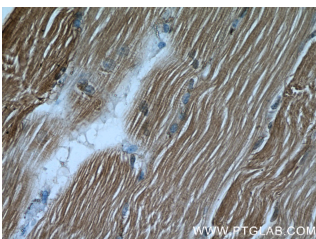
ALDOA; ALDOA, Aldolase A



Immunofluorescent analysis of HeLa cells, using ALDOA antibody 11217-1-AP at 1:25 dilution and Rhodamine-labeled goat anti-rabbit IgG (red).



Immunohistochemical of paraffin-embedded human skeletal muscle using 11217-1-AP (ALDOA antibody) at dilution of 1:50 (under 10x lens)



Immunohistochemical of paraffin-embedded human skeletal muscle using 11217-1-AP (ALDOA antibody) at dilution of 1:50 (under 40x lens)

Background

ALDOA (Fructose-bisphosphate aldolase A) is also named as lung cancer antigen NY-LU-1, muscle-type aldolase, ALDA and belongs to the class I fructose-bisphosphate aldolase family. The ALDOA gene encodes a homotetrameric protein (PMID:14615364). It is found in skeletal muscle and red blood cells, and functions in glycolysis, promoting the reversible cleavage of FBP to triose phosphate, G-3-P and DHAP. ALDOA is upregulated in various cancers, including human lung squamous and renal cell carcinomas (PMID:19937139).

Applications

Tested applications:	ELISA, WB, IHC, IF, IP, FC
Cited applications:	IF, IHC, WB
Species specificity:	Human, Mouse, Rat; other species not tested.
Cited species:	Human, mouse, rat
Calculated ALDOA MW:	39 kDa
Observed ALDOA MW:	39kd
Positive WB detected in	HeLa cells, HEK-293 cells, HepG2 cells, Jurkat cells, mouse uterus tissue
Positive IP detected in	HepG2 cells
Positive IHC detected in	Human skeletal muscle tissue, human colon cancer tissue, human lung cancer tissue
Positive IF detected in	HeLa cells
Positive FC detected in	HeLa cells
Recommended dilution:	WB: 1:500-1:5000 IP: 1:500-1:5000 IHC: 1:20-1:200 IF: 1:10-1:100 FC: N/A

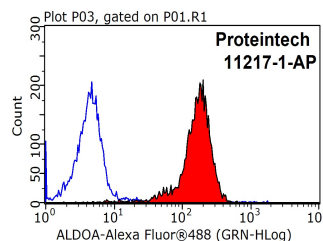
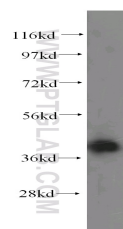
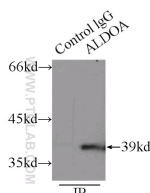
Application key: WB = Western blotting, IHC = Immunohistochemistry, IF = Immunofluorescence, IP = Immunoprecipitation

Immunogen information

Immunogen:	Ag1726
GenBank accession number:	BC016800
Gene ID (NCBI):	226
Full name:	Aldolase A, fructose-bisphosphate

Product information

Purification method:	Antigen affinity purification
Storage:	PBS with 0.1% sodium azide and 50% glycerol pH 7.3. Store at -20°C.



**IP Result of anti-ALDOA
(IP:11217-1-AP, 3ug;
Detection:11217-1-AP 1:1000)
with HepG2 cells lysate
6000ug.**

**HeLa cells were subjected to
SDS PAGE followed by
western blot with 11217-1-
AP(ALDOA antibody) at
dilution of 1:500**

**1X10⁶ HeLa cells were
stained with 0.2ug ALDOA
antibody (11217-1-AP, red)
and control antibody (blue).
Fixed with 90% MeOH
blocked with 3% BSA (30
min). Alexa Fluor 488-
conjugated AffiniPure Goat
Anti-Rabbit IgG(H+L) with
dilution 1:1000.**