

PSMA8 Polyclonal Antibody

Catalog number: 14022-1-AP

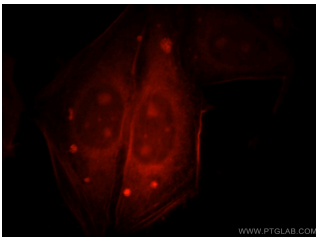
Size: 57 µg/150 µl

Source: Rabbit

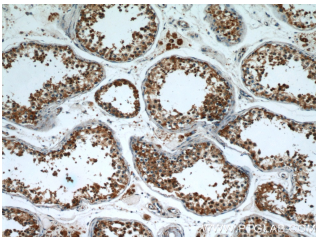
Isotype: IgG

Synonyms:

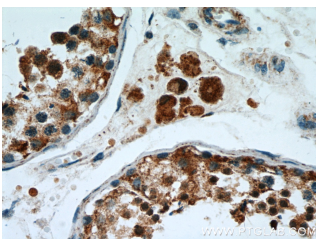
PSMA8; PSMA7L, PSMA8



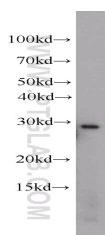
Immunofluorescent analysis of HepG2 cells, using PSMA8 antibody 14022-1-AP at 1:25 dilution and Rhodamine-labeled goat anti-rabbit IgG (red).



Immunohistochemical of paraffin-embedded human testis using 14022-1-AP(PSMA8 antibody) at dilution of 1:50 (under 10x lens)



Immunohistochemical of paraffin-embedded human testis using 14022-1-AP(PSMA8 antibody) at dilution of 1:50 (under 40x lens)



K-562 cells were subjected to SDS PAGE followed by western blot with 14022-1-AP(PSMA8 antibody) at

Applications

Tested applications:

ELISA, WB, IHC, IF, FC

Species specificity:

Human, Mouse, Rat; other species not tested.

Calculated PSMA8 MW:

29 kDa

Observed PSMA8 MW:

28kd

Positive WB detected in

K-562 cells, Jurkat cells, mouse thymus tissue,

RAW264.7 cells

Positive IHC detected in

Human testis tissue

Positive IF detected in

HepG2 cells

Positive FC detected in

HepG2 cells

Recommended dilution:

WB: 1:500-1:5000

IHC: 1:20-1:200

IF: 1:10-1:100

FC: N/A

Application key: WB = Western blotting, IHC = Immunohistochemistry, IF = Immunofluorescence, IP = Immunoprecipitation

Immunogen information

Immunogen:

Ag5138

GenBank accession number:

BC042820

Gene ID (NCBI):

143471

Full name:

Proteasome (prosome, macropain) subunit, alpha type, 8

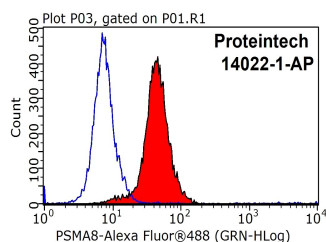
Product information

Purification method:

Antigen affinity purification

Storage:

PBS with 0.1% sodium azide and 50% glycerol pH 7.3. Store at -20°C.



1X10⁶ HepG2 cells were stained with .2µg PSMA8 antibody (14022-1-AP, red) and control antibody (blue).

dilution of 1:500

**Fixed with 90% MeOH
blocked with 3% BSA (30
min). Alexa Fluor 488-
conjugated AffiniPure Goat
Anti-Rabbit IgG(H+L) with
dilution 1:1000.**