

RCC1 Polyclonal Antibody

Catalog number: 10697-1-AP

Size: 20 µg/150 µl

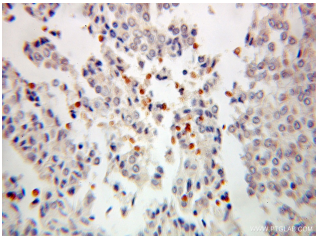
Source: Rabbit

Isotype: IgG

Synonyms:

SNHG3-RCC1; RCC1, SNHG3

RCC1, SNHG3-RCC1



Immunohistochemical of paraffin-embedded human ovary tumor using 10697-1-AP (SNHG3-RCC1 antibody) at dilution of 1:100 (under 10x lens)



MCF7 cells were subjected to SDS PAGE followed by western blot with 10697-1-AP (SNHG3-RCC1 antibody) at dilution of 1:300

Applications

Tested applications:	ELISA, WB, IHC
Species specificity:	Human, Mouse, Rat; other species not tested.
Calculated RCC1 MW:	45kd, 48kd
Observed RCC1 MW:	68kd
Positive WB detected in	MCF7 cells, Jurkat cells, mouse testis tissue, Raji cells
Positive IHC detected in	Human ovary tumor tissue
Recommended dilution:	WB: 1:200-1:1000 IHC: 1:20-1:200

Application key: WB = Western blotting, IHC = Immunohistochemistry, IF = Immunofluorescence, IP = Immunoprecipitation

Immunogen information

Immunogen:	Ag1042
GenBank accession number:	BC007300
Gene ID (NCBI):	751867
Full name:	SNHG3-RCC1 readthrough transcript

Product information

Purification method:	Antigen affinity purification
Storage:	PBS with 0.1% sodium azide and 50% glycerol pH 7.3. Store at -20°C.