

## CDCP1 Polyclonal Antibody

Catalog number: 12754-1-AP

Size: 20 µg/150 µl

Source: Rabbit

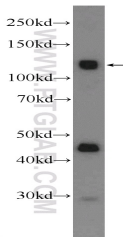
Isotype: IgG

Synonyms:

CDCP1; CD318, CDCP1,

Membrane glycoprotein gp140,

SIMA135, TRASK



A549 cells were subjected to SDS PAGE followed by western blot with 12754-1-AP (CDCP1 Antibody) at dilution of 1:600

### Background

CDCP1, also named as CD318, TRASK, SIMA 135 and CD138, is a 135-140 kDa transmembrane protein that contains three CUB domains within the extracellular region and a hexalysine stretch within the cytoplasmic region. A soluble form with MW 80 kDa (p80) is cleaved at an unidentified site on the N-terminal side. CDCP1 is a novel marker for hematopoietic stem cells.

### Applications

Tested applications:	ELISA, WB
Species specificity:	Human, Mouse, Rat; other species not tested.
Calculated CDCP1 MW:	836aa, 93 kDa
Observed CDCP1 MW:	130 kDa
Positive WB detected in	A549 cells
Recommended dilution:	WB: 1:200-1:2000

Application key: WB = Western blotting, IHC = Immunohistochemistry, IF = Immunofluorescence, IP = Immunoprecipitation

### Immunogen information

Immunogen:	Ag3439
GenBank accession number:	BC021099
Gene ID (NCBI):	64866
Full name:	CUB domain containing protein 1

### Product information

Purification method:	Antigen affinity purification
Storage:	PBS with 0.02% sodium azide and 50% glycerol pH 7.3. Store at -20°C.