

PSMD10 Polyclonal Antibody

Catalog number: 12342-2-AP

Size: 36 µg/150 µl

Source: Rabbit

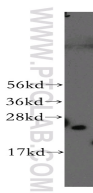
Isotype: IgG

Synonyms:

PSMD10; dJ889N15.2,

Gankyrin, p28, p28(GANK),

PSMD10



human brain tissue were subjected to SDS PAGE followed by western blot with 12342-2-AP(PSMD10 antibody) at dilution of 1:500

Applications

| | |
|-------------------------|--|
| Tested applications: | ELISA, WB |
| Species specificity: | Human, Mouse, Rat; other species not tested. |
| Calculated PSMD10 MW: | 226aa, 24 kDa |
| Observed PSMD10 MW: | 24 kDa |
| Positive WB detected in | Human brain tissue, human placenta tissue |
| Recommended dilution: | WB: 1:200-1:2000 |

Application key: WB = Western blotting, IHC = Immunohistochemistry, IF = Immunofluorescence, IP = Immunoprecipitation

Immunogen information

| | |
|---------------------------|---|
| Immunogen: | Ag2994 |
| GenBank accession number: | BC011960 |
| Gene ID (NCBI): | 5716 |
| Full name: | Proteasome (prosome, macropain) 26S subunit, non-ATPase, 10 |

Product information

| | |
|----------------------|---|
| Purification method: | Antigen affinity purification |
| Storage: | PBS with 0.1% sodium azide and 50% glycerol pH 7.3. Store at -20°C. |