

SCYL2 Polyclonal Antibody

Catalog number: 12325-1-AP

Size: 20 µg/150 µl

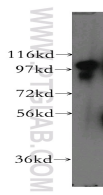
Source: Rabbit

Isotype: IgG

Synonyms:

SCYL2; CVAK104; FLJ10074;

KIAA1360



NIH/3T3 cells were subjected to SDS PAGE followed by western blot with 12325-1-AP(SCYL2 Antibody) at dilution of 1:1500

Applications

Tested applications:	ELISA, WB
Species specificity:	Human, mouse, rat; other species not tested.
Positive WB detected in:	NIH/3T3 cells, mouse uterus tissue
Calculated SCYL2 MW:	929aa,104kd
Observed SCYL2 MW:	104kd
Recommended dilution:	WB: 1:500-1:5000

Application key: WB = Western blotting, IHC = Immunohistochemistry, IF = Immunofluorescence, IP = Immunoprecipitation, FC = Flow cytometry

Immunogen information

Immunogen:	Ag2988
GenBank accession number:	BC012387
Gene ID (NCBI):	55681
Full name:	SCY1-like 2 (<i>S. cerevisiae</i>)

Product information

Purification method:	Antigen affinity purification
Storage:	PBS with 0.1% sodium azide and 50% glycerol pH 7.3. Store at -20°C.