

EFEMP2 Polyclonal Antibody

Catalog number: 12004-1-AP

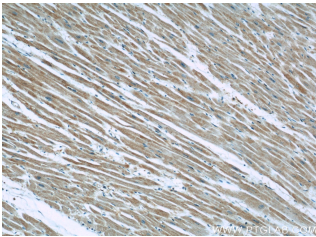
Size: 24 µg/150 µl

Source: Rabbit

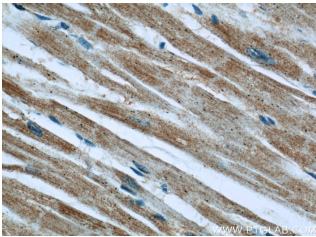
Isotype: IgG

Synonyms:

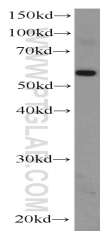
EFEMP2; EFEMP2, FBLN4, FIBL
4, Fibulin 4, MBP1, Protein
UPH1, UPH1



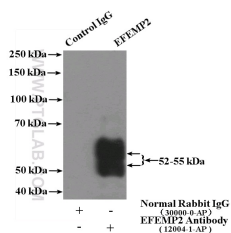
Immunohistochemical of paraffin-embedded human heart using 12004-1-AP (EFEMP2 antibody) at dilution of 1:50 (under 10x lens)



Immunohistochemical of paraffin-embedded human heart using 12004-1-AP (EFEMP2 antibody) at dilution of 1:50 (under 40x lens)



mouse kidney tissue were subjected to SDS PAGE followed by western blot with 12004-1-AP (EFEMP2 antibody) at dilution of 1:500



IP Result of anti-EFEMP2

(IP:12004-1-AP, 4µg;

Applications

Tested applications:	ELISA, WB, IHC, IP
Species specificity:	Human, Mouse; other species not tested.
Calculated EFEMP2 MW:	443aa, 49 kDa
Observed EFEMP2 MW:	52-55 kDa
Positive WB detected in	Mouse kidney tissue, K-562 cells
Positive IP detected in	Mouse kidney tissue
Positive IHC detected in	Human heart tissue, human prostate cancer tissue, human skin tissue
Recommended dilution:	WB: 1:200-1:2000 IP: 1:200-1:2000 IHC: 1:20-1:200

Application key: WB = Western blotting, IHC = Immunohistochemistry, IF = Immunofluorescence, IP = Immunoprecipitation

Immunogen information

Immunogen:	Ag2640
GenBank accession number:	BC010456
Gene ID (NCBI):	30008
Full name:	EGF-containing fibulin-like extracellular matrix protein 2

Product information

Purification method:	Antigen affinity purification
Storage:	PBS with 0.02% sodium azide and 50% glycerol pH 7.3. Store at -20°C.

Detection:12004-1-AP 1:500)
with mouse kidney tissue
lysate 4000ug.