

C1QA Polyclonal Antibody

Catalog number: 11602-1-AP

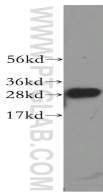
Size: 34 µg/150 µl

Source: Rabbit

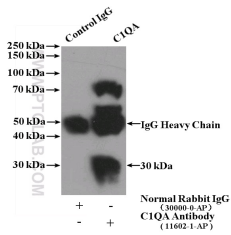
Isotype: IgG

Synonyms:

C1QA; C1QA



human spleen tissue were subjected to SDS PAGE followed by western blot with 11602-1-AP(C1QA antibody) at dilution of 1:500



IP Result of anti-C1QA (IP:11602-1-AP, 4µg; Detection:11602-1-AP 1:300) with mouse liver tissue lysate 4000µg.

Background

The first component of complement is a calcium-dependent complex of the 3 subcomponents C1q, C1r, and C1s. C1q is composed of 18 polypeptide chains: six A-chains, six B-chains, and six C-chains. Each chain contains a collagen-like region located near the N terminus and a C-terminal globular region. Deficiency of C1q has been associated with lupus erythematosus and glomerulonephritis. This antibody is raised against C1QA which is the A-chain polypeptide of human complement subcomponent C1q.

Applications

Tested applications:	ELISA, WB, IP
Cited applications:	WB
Species specificity:	Human,Mouse,Rat; other species not tested.
Cited species:	Mouse
Calculated C1QA MW:	245aa,26 kDa
Observed C1QA MW:	30 kDa
Positive WB detected in	Human spleen tissue, human colon tissue, human heart tissue, human liver tissue, human lung tissue, mouse liver tissue, mouse serum tissue
Positive IP detected in	Mouse liver tissue
Recommended dilution:	WB: 1:500-1:5000 IP: 1:200-1:1000

Application key: WB = Western blotting, IHC = Immunohistochemistry, IF = Immunofluorescence, IP = Immunoprecipitation

Immunogen information

Immunogen:	Ag2141
GenBank accession number:	BC030153
Gene ID (NCBI):	712
Full name:	Complement component 1, q subcomponent, A chain

Product information

Purification method:	Antigen affinity purification
Storage:	PBS with 0.1% sodium azide and 50% glycerol pH 7.3. Store at -20°C.