

GOLGA2/GM130 Polyclonal Antibody

Catalog number: 11308-1-AP

Size: 30 µg/150 µl

Source: Rabbit

Isotype: IgG

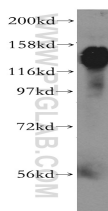
Synonyms:

GOLGA2; GM130, GM130

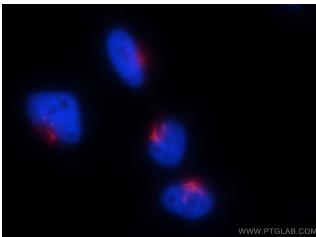
autoantigen, GOLGA2, Golgin

95, Golgin subfamily A member

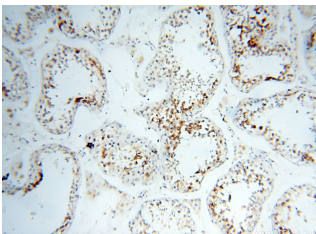
2



HEK-293 cells were subjected to SDS PAGE followed by western blot with 11308-1-AP(GOLGA2,GM130 antibody) at dilution of 1:1000



Immunofluorescent analysis of HEK-293 cells using 11308-1-AP(GM130;GOLGA2 Antibody) at dilution of 1:25 and Rhodamine-Goat anti-Rabbit IgG



Immunohistochemical of paraffin-embedded human testis using 11308-1-AP(GOLGA2,GM130 antibody) at dilution of 1:100 (under 10x lens)

Background

GOLGA2, also known as GM130, is a 130 kDa cis-Golgi matrix protein which is one component of the detergent and salt resistant Golgi matrix. It is a peripheral membrane protein highly bound to Golgi membrane and localized mainly at the cytoplasmic face of cis-Golgi membrane. Together with its interacting partner proteins, including p115, giantin, GRASP65, and Rab GTPase, GOLGA2/GM130 is involved in the regulation of ER-to-Golgi transport and also in the maintenance of the Golgi structure. Emerging evidence suggest that the GOLGA2/GM130 has potential roles in the control of glycosylation, cell cycle progression, and higher order cell functions such as cell polarization and directed cell migration. (PMID: 20197635)

Applications

Tested applications:	ELISA, WB, IHC, IF, FC
Cited applications:	IF, WB
Species specificity:	Human,Mouse,Rat; other species not tested.
Cited species:	Human, rat
Calculated GOLGA2/GM130 MW:	111 kDa
Observed GOLGA2/GM130 MW:	130 kDa
Positive WB detected in	HEK-293 cells, human spleen tissue
Positive IHC detected in	Human testis tissue, human kidney tissue, human placenta tissue
Positive IF detected in	HEK-293 cells
Positive FC detected in	HEK-293 cells
Recommended dilution:	WB: 1:1000-1:10000 IHC: 1:20-1:200 IF: 1:10-1:100 FC: N/A

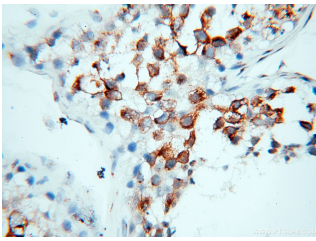
Application key: WB = Western blotting, IHC = Immunohistochemistry, IF = Immunofluorescence, IP = Immunoprecipitation

Immunogen information

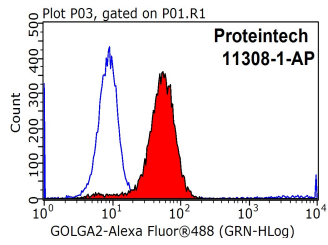
Immunogen:	Ag1848
GenBank accession number:	BC014188
Gene ID (NCBI):	2801
Full name:	Golgi autoantigen, golgin subfamily a, 2

Product information

Purification method:	Antigen affinity purification
Storage:	PBS with 0.1% sodium azide and 50% glycerol pH 7.3. Store at -20°C.



Immunohistochemical of paraffin-embedded human testis using 11308-1-AP(GOLGA2,GM130 antibody) at dilution of 1:100 (under 40x lens)



1X10⁶ HEK-293 cells were stained with 0.2ug GM130;GOLGA2 antibody (11308-1-AP, red) and control antibody (blue). Fixed with 90% MeOH blocked with 3% BSA (30 min). Alexa Fluor 488-conjugated AffiniPure Goat Anti-Rabbit IgG(H+L) with dilution 1:1000.