

HSPA6 Polyclonal Antibody

Catalog number: 13616-1-AP

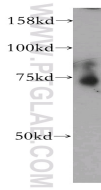
Size: 22 µg/150 µl

Source: Rabbit

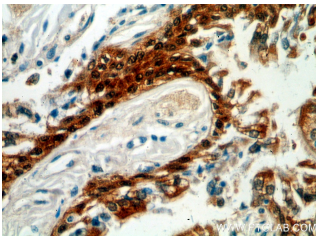
Isotype: IgG

Synonyms:

HSPA6;



U-937 cells were subjected to SDS PAGE followed by western blot with 13616-1-AP(HSPA6 Antibody) at dilution of 1:1000



Immunohistochemistry of paraffin-embedded human lung cancer using 13616-1-AP(HSPA6 Antibody) at Dilution 1:50 (under 40x lens)

Applications

Tested applications:	ELISA, WB, IHC
Cited applications:	WB
Species specificity:	Human, mouse, rat; other species not tested.
Cited species:	Pig
Positive WB detected in:	U-937 cells
Calculated HSPA6 MW:	643aa,71kd
Observed HSPA6 MW:	70kd
Positive IHC detected in:	Human lung cancer
Recommended dilution:	WB: 1:500-1:5000 IHC: 1:20-1:200

Application key: WB = Western blotting, IHC = Immunohistochemistry, IF = Immunofluorescence, IP = Immunoprecipitation, FC = Flow cytometry

Immunogen information

Immunogen:	Ag4522
GenBank accession number:	BC035665
Gene ID (NCBI):	3310
Full name:	Heat shock 70kDa protein 6 (HSP70B')

Product information

Purification method:	Antigen affinity purification
Storage:	PBS with 0.02% sodium azide and 50% glycerol pH 7.3. Store at -20°C.