

RUFY2 Polyclonal Antibody

Catalog number: 14137-1-AP

Size: 25 µg/150 µl

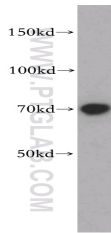
Source: Rabbit

Isotype: IgG

Synonyms:

RUFY2; FLJ10063; KIAA1537;

RABIP4R; ZFYVE13



PC-3 cells were subjected to SDS PAGE followed by western blot with 14137-1-AP(RUFY2 Antibody) at dilution of 1:2000

Applications

Tested applications:	ELISA, WB
Species specificity:	Human, mouse, rat; other species not tested.
Positive WB detected in:	PC-3 cells, mouse lung tissue
Calculated RUFY2 MW:	403aa,46kd
Observed RUFY2 MW:	65-70kd
Recommended dilution:	WB: 1:1000-1:10000

Application key: WB = Western blotting, IHC = Immunohistochemistry, IF = Immunofluorescence, IP = Immunoprecipitation, FC = Flow cytometry

Immunogen information

Immunogen:	Ag5363
GenBank accession number:	BC041092
Gene ID (NCBI):	55680
Full name:	RUN and FYVE domain containing 2

Product information

Purification method:	Antigen affinity purification
Storage:	PBS with 0.02% sodium azide and 50% glycerol pH 7.3. Store at -20°C.