

## EMB Polyclonal Antibody

Catalog number: 13946-1-AP

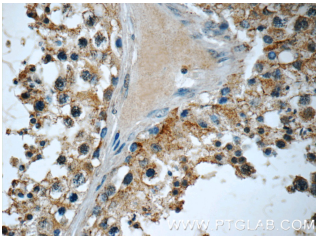
Size: 28 µg/150 µl

Source: Rabbit

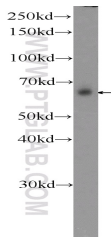
Isotype: IgG

Synonyms:

EMB; EMB, Embigin, embigin homolog (mouse)



Immunohistochemistry of paraffin-embedded human testis tissue slide using 13946-1-AP (EMB Antibody) at dilution of 1:50 (under 40x lens)



HeLa cells were subjected to SDS PAGE followed by western blot with 13946-1-AP (EMB Antibody) at dilution of 1:1000

### Background

EMB, also named as Embigin, is a 327 amino acid protein, which contains two Ig-like V-type (immunoglobulin-like) domains. EMB as a membrane protein may function as a regulator of cell/ECM interactions during development and in the homeostasis of normal adult tissues. EMB is a transmembrane glycoprotein with a protein component of 34 kDa, but western blot analysis of embigin in mouse soleus muscles detects a glycosylated full-length protein with an molecular mass of 70 kDa. (PMID: 19164284)

### Applications

Tested applications:	ELISA, IHC, WB
Species specificity:	Human, Mouse; other species not tested.
Calculated EMB MW:	37 kDa
Observed EMB MW:	70 kDa
Positive WB detected in	HeLa cells, mouse skeletal muscle tissue
Positive IHC detected in	Human testis tissue
Recommended dilution:	WB: 1:500-1:5000 IHC: 1:20-1:200

Application key: WB = Western blotting, IHC = Immunohistochemistry, IF = Immunofluorescence, IP = Immunoprecipitation

### Immunogen information

Immunogen:	Ag5031
GenBank accession number:	BC059398
Gene ID (NCBI):	133418
Full name:	Embigin homolog (mouse)

### Product information

Purification method:	Antigen affinity purification
Storage:	PBS with 0.1% sodium azide and 50% glycerol pH 7.3. Store at -20°C.