

MSI2 Polyclonal Antibody

Catalog number: 10770-1-AP

Size: 20 µg/150 µl

Source: Rabbit

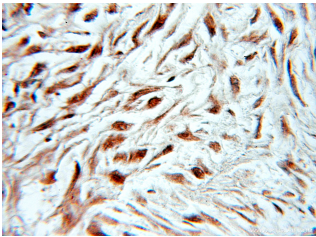
Isotype: IgG

Synonyms:

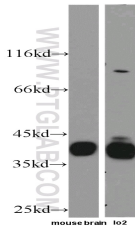
MSI2; FLJ36569, MSI2, MSI2H,

Musashi 2, musashi homolog 2

(Drosophila)



Immunohistochemical of paraffin-embedded human ovary tumor using 10770-1-AP (Musashi-2 antibody) at dilution of 1:10 (under 10x lens)



mouse brain tissue were subjected to SDS PAGE followed by western blot with 10770-1-AP (Musashi-2 antibody) at dilution of 1:500

Background

MSI2 is an RNA-binding protein that regulates the expression of target mRNAs at the translation level. It binds to RNA via 2 ribonucleoprotein-type RNA recognition motifs in their N-termini, to consensus motifs in mRNAs to inhibit transcription. It may play a role in the proliferation and maintenance of stem cells in the central nervous system. MSI2 can regulate normal hematopoiesis and promote aggressive myeloid leukemia

Applications

Tested applications:	ELISA, WB, IHC
Cited applications:	IHC
Species specificity:	Human, Mouse, Rat; other species not tested.
Cited species:	Human
Calculated MSI2 MW:	35 kDa
Observed MSI2 MW:	37-40 kDa
Positive WB detected in	Mouse brain tissue, C6 cells, COLO 320 cells, MCF-7 cells, PC-12 cells
Positive IHC detected in	Human ovary tumor tissue, human gliomas tissue
Recommended dilution:	WB: 1:200-1:2000 IHC: 1:10-1:100

Application key: WB = Western blotting, IHC = Immunohistochemistry, IF = Immunofluorescence, IP = Immunoprecipitation

Immunogen information

Immunogen:	Ag1213
GenBank accession number:	BC001526
Gene ID (NCBI):	124540
Full name:	Musashi homolog 2 (Drosophila)

Product information

Purification method:	Antigen affinity purification
Storage:	PBS with 0.1% sodium azide and 50% glycerol pH 7.3. Store at -20°C.