

Cytokeratin 18 Polyclonal Antibody

Catalog number: 10830-1-AP

Size: 28 µg/150 µl

Source: Rabbit

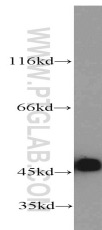
Isotype: IgG

Synonyms:

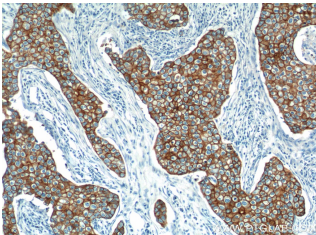
KRT18; CK 18, CYK18,

Cytokeratin 18, K18, keratin 18,

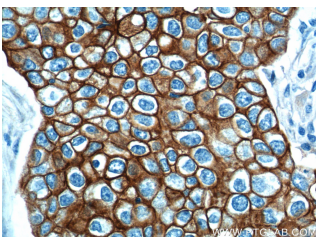
KRT18



A431 cells were subjected to SDS PAGE followed by western blot with 10830-1-AP (KRT18 antibody) at dilution of 1:2000



Immunohistochemistry of paraffin-embedded human breast cancer tissue slide using 10830-1-AP (KRT18 Antibody) at dilution of 1:1000 (under 10x lens).



Immunohistochemistry of paraffin-embedded human breast cancer tissue slide using 10830-1-AP (KRT18 Antibody) at dilution of 1:1000 (under 40x lens).

Background

Keratins are a large family of proteins that form the intermediate filament cytoskeleton of epithelial cells, which are classified into two major sequence types. Type I keratins are a group of acidic intermediate filament proteins, including K9–K23, and the hair keratins Ha1–Ha8. Type II keratins are the basic or neutral counterparts to the acidic type I keratins, including K1–K8, and the hair keratins, Hb1–Hb6. KRT18, also named as CYK18, PIG46 and K18, is the most commonly found members of the intermediate filament gene family. KRT18 is a type I keratin which is found primarily in non squamous epithelia and is present in a majority of adenocarcinomas and ductal carcinomas but not in squamous cell carcinomas.

Applications

Tested applications:	ELISA, WB, IP, IF, FC, IHC
Cited applications:	FC, IF, IHC, WB
Species specificity:	Human, Mouse; other species not tested.
Cited species:	Human, mouse, rat
Calculated Cytokeratin 18 MW:	48 kDa
Observed Cytokeratin 18 MW:	48 kDa
Positive WB detected in	A431 cells, K-562 cells
Positive IP detected in	A431 cells
Positive IHC detected in	Human breast cancer tissue, human cervical cancer tissue, human colon cancer tissue, human endometrial cancer tissue, human liver cancer tissue, human lung cancer tissue, human ovary tumor tissue, human pancreas cancer tissue, human prostate cancer tissue, human stomach cancer tissue
Positive IF detected in	HeLa cells, HepG2 cells, mouse olfactory epithelium tissue
Positive FC detected in	MCF-7 cells
Recommended dilution:	WB: 1:1000-1:10000 IP: 1:1000-1:10000 IHC: 1:50-1:500 IF: 1:20-1:200 FC: N/A

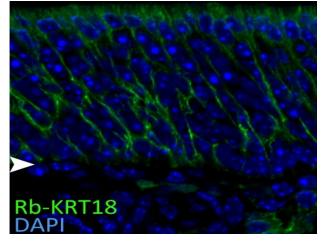
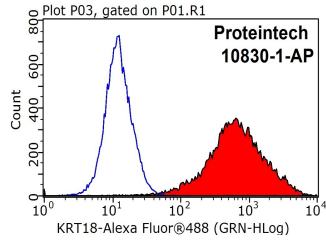
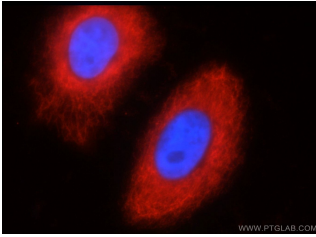
Application key: WB = Western blotting, IHC = Immunohistochemistry, IF = Immunofluorescence, IP = Immunoprecipitation

Immunogen information

Immunogen:	Ag1260
GenBank accession number:	BC000180
Gene ID (NCBI):	3875
Full name:	Keratin 18

Product information

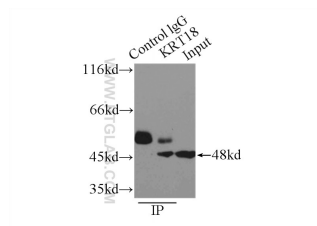
Purification method:	Antigen affinity purification
Storage:	PBS with 0.1% sodium azide and 50% glycerol pH 7.3. Store at -20°C.



Immunofluorescent analysis of HeLa cells using 10830-1-AP(KRT18 Antibody) at dilution of 1:50 and Rhodamine-Goat anti-Rabbit IgG

1X10⁶ MCF-7 cells were stained with 0.2ug KRT18 antibody (10830-1-AP, red) and control antibody (blue). Fixed with 90% MeOH blocked with 3% BSA (30 min). Alexa Fluor 488-conjugated AffiniPure Goat Anti-Rabbit IgG(H+L) with dilution 1:1000.

IF result of CK18 antibody (10830-1-AP, 1:50) with 1% PLP fixed the apical sustentacular cells of adult mouse olfactory epithelium. (Green: CK18; Blue: DAPI). Basal lamina is marked by an arrow head. By Brian Lin, Tufts University.



IP Result of anti-KRT18 (IP:10830-1-AP, 3ug; Detection:10830-1-AP 1:2000) with A431 cells lysate 3300ug.