

DNASE1L3 Polyclonal Antibody

Catalog number: 11330-1-AP

Size: 20 µg/150 µl

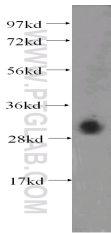
Source: Rabbit

Isotype: IgG

Synonyms:

DNASE1L3; DHP2; DNAS1L3;

LSD



HEK-293 cells were subjected to SDS PAGE followed by western blot with 11330-1-AP (DNASE1L3 Antibody) at dilution of 1:600

Background

Deoxyribonuclease 1-like 3 (DNASE1L3, DNase gamma, DNase Y, LS-DNase) is member of a DNASE1 protein family that is identified by similar biochemical properties such as Ca²⁺/Mg²⁺- dependency and an optimal pH of about 7.0 as well as by a high similarity in their nucleic acid and amino acid sequences [PMID:15796714]. It is an endonuclease and cleaves double-stranded DNA (and single-stranded DNA) producing 3'-OH/5'-P ends, which is Ca²⁺/Mg²⁺-dependent and inhibited by Zn²⁺, but not by monomeric actin [PMID:9665719]. In addition, it has been suggested to be involved in apoptotic DNA fragmentation of thymocytes' neuronal PC12 cells, C2C12 myoblasts and of cell lines expressing the recombinant nuclease [PMID: 7957253, 9307016]

Applications

Tested applications:	ELISA, WB
Species specificity:	Human, mouse, rat; other species not tested.
Positive WB detected in:	HEK-293 cells
Calculated DNASE1L3 MW:	305aa,36kd
Observed DNASE1L3 MW:	33kd
Recommended dilution:	WB: 1:200-1:2000

Application key: WB = Western blotting, IHC = Immunohistochemistry, IF = Immunofluorescence, IP = Immunoprecipitation, FC = Flow cytometry

Immunogen information

Immunogen:	Ag1873
GenBank accession number:	BC015831
Gene ID (NCBI):	1776
Full name:	Deoxyribonuclease I-like 3

Product information

Purification method:	Antigen affinity purification
Storage:	PBS with 0.1% sodium azide and 50% glycerol pH 7.3. Store at -20°C.