

MCM7 Polyclonal Antibody

Catalog number: 11225-1-AP

Size: 40 µg/150 µl

Source: Rabbit

Isotype: IgG

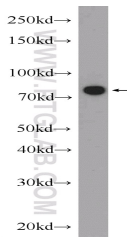
Synonyms:

MCM7; CDABP0042, CDC47,

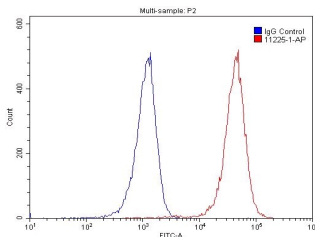
CDC47 homolog, MCM2,

MCM7, P1.1 MCM3, P1CDC47,

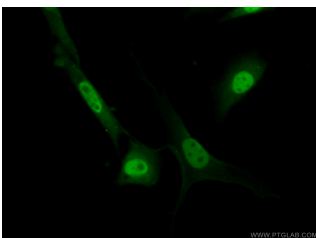
P85MCM, PNAS 146



NIH/3T3 cells were subjected to SDS PAGE followed by western blot with 11225-1-AP (MCM7 Antibody) at dilution of 1:3000



1X10⁶ Raji cells were stained with 0.2µg MCM7 antibody (11225-1-AP, red) and control antibody (blue). Fixed with 4% PFA blocked with 3% BSA (30 min). Alexa Fluor 488-conjugated AffiniPure Goat Anti-Rabbit IgG(H+L) with dilution 1:1500.



Immunofluorescent analysis of (10% Formaldehyde) fixed NIH/3T3 cells using 11225-1-AP (MCM7 Antibody) at dilution of 1:50 and Alexa Fluor 488-conjugated AffiniPure Goat Anti-Rabbit IgG(H+L)

Background

Genes encoding PPR (pentatricopeptide repeat)-containing proteins constitute one of the largest gene families in plants. The majority of these proteins are predicted to target organelles and to bind to RNA. Strikingly, there is a dearth of these proteins in mammals, although genomic searches reveal six candidates, all of which are also predicted to target the mitochondrion. One of these proteins, MRPS27 is participated in transcription and translation respectively. [PMID:18939947] MRPS27 is a component of the small subunit of the mitochondrial ribosome that is encoded by the nuclear genome [PMID: 11279123].

Applications

Tested applications:	ELISA, WB, IP, IHC, IF, FC
Cited applications:	WB
Species specificity:	Human, Mouse, Rat; other species not tested.
Cited species:	Mouse
Calculated MCM7 MW:	81 kDa
Observed MCM7 MW:	81 kDa
Positive WB detected in	NIH/3T3 cells, A431 cells, HeLa cells, MCF7 cells
Positive IP detected in	NIH/3T3 cells
Positive IHC detected in	Human lung cancer tissue, human lymphoma tissue
Positive IF detected in	NIH/3T3 cells
Positive FC detected in	Raji cells
Recommended dilution:	WB: 1:1000-1:10000 IP: 1:1000-1:10000 IHC: 1:20-1:200 IF: 1:50-1:500 FC: N/A

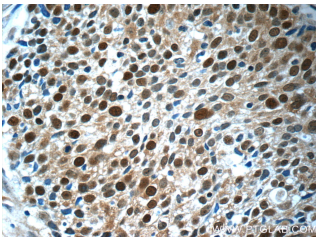
Application key: WB = Western blotting, IHC = Immunohistochemistry, IF = Immunofluorescence, IP = Immunoprecipitation

Immunogen information

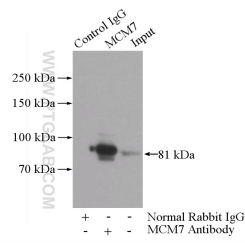
Immunogen:	Ag1730
GenBank accession number:	BC013375
Gene ID (NCBI):	4176
Full name:	Minichromosome maintenance complex component 7

Product information

Purification method:	Antigen affinity purification
Storage:	PBS with 0.1% sodium azide and 50% glycerol pH 7.3. Store at -20°C.



Immunohistochemistry of paraffin-embedded human lung cancer tissue slide using 11225-1-AP(MCM7 Antibody) at dilution of 1:50 (under 40x lens)



IP Result of anti-MCM7 (IP:11225-1-AP, 4ug; Detection:11225-1-AP 1:2000) with NIH/3T3 cells lysate 1600ug.