

## ATP12A Polyclonal Antibody

Catalog number: 13231-1-AP

Size: 20 µg/150 µl

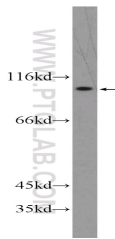
Source: Rabbit

Isotype: IgG

Synonyms:

ATP12A; ATP12A, ATP1A1,

Proton pump



HEK-293 cells were subjected to SDS PAGE followed by western blot with 13231-1-AP( ATP12A Antibody) at dilution of 1:500

### Applications

Tested applications:	ELISA, WB
Species specificity:	Human; other species not tested.
Calculated ATP12A MW:	1045aa,116kd
Observed ATP12A MW:	100-110 kDa
Positive WB detected in	HEK-293 cells, A431 cells
Recommended dilution:	WB: 1:200-1:2000

Application key: WB = Western blotting, IHC = Immunohistochemistry, IF = Immunofluorescence, IP = Immunoprecipitation

### Immunogen information

Immunogen:	Ag4105
GenBank accession number:	BC031609
Gene ID (NCBI):	479
Full name:	ATPase, H <sup>+</sup> /K <sup>+</sup> transporting, nongastric, alpha polypeptide

### Product information

Purification method:	Antigen affinity purification
Storage:	PBS with 0.1% sodium azide and 50% glycerol pH 7.3. Store at -20°C.