

FEM1C Polyclonal Antibody

Catalog number: 14037-1-AP

Size: 20 µg/150 µl

Source: Rabbit

Isotype: IgG

Synonyms:

FEM1C; EUROIMAGE686608,

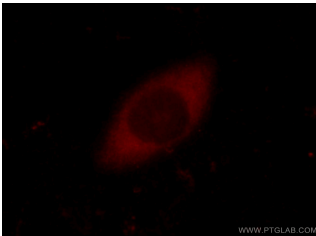
EUROIMAGE783647, fem 1

homolog c (C. elegans), FEM1

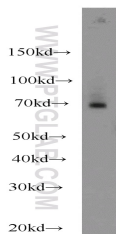
gamma, FEM1A, FEM1C,

KIAA1785, Protein fem 1

homolog C



Immunofluorescent analysis of HeLa cells using 14037-1-AP (FEM1C Antibody) at dilution of 1:25 and Rhodamine-Goat anti-Rabbit IgG



HepG2 cells were subjected to SDS PAGE followed by western blot with 14037-1-AP (FEM1C antibody) at dilution of 1:1000

Background

Protein fem-1 homolog C (FEM1C) is involved in protein modification and ubiquitination. Probable component of an E3 ubiquitin-protein ligase complex, in which it may act as a substrate recognition subunit. Highly expressed in kidney, cardiac tissue, skeletal muscle and testis. Expressed at lower levels in other tissues, including cartilage. This antibody specifically recognizes the 69kd FEM1C protein.

Applications

Tested applications:	ELISA, WB, IF
Species specificity:	Human, Mouse; other species not tested.
Calculated FEM1C MW:	69kd
Observed FEM1C MW:	69 kDa
Positive WB detected in	HepG2 cells, mouse brain tissue, mouse heart tissue
Positive IF detected in	HeLa cells
Recommended dilution:	WB: 1:500 - 1:2000 IF: 1:12.5 - 1:50

Application key: WB = Western blotting, IHC = Immunohistochemistry, IF = Immunofluorescence, IP = Immunoprecipitation

Immunogen information

Immunogen:	Ag5099
GenBank accession number:	BC028369
Gene ID (NCBI):	56929
Full name:	Fem-1 homolog c (C. elegans)

Product information

Purification method:	Antigen affinity purification
Storage:	PBS with 0.1% sodium azide and 50% glycerol pH 7.3. Store at -20°C.