

alpha-synuclein Polyclonal Antibody

Catalog number: 10842-1-AP

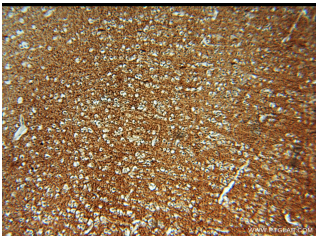
Size: 76 µg/150 µl

Source: Rabbit

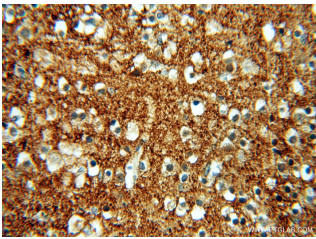
Isotype: IgG

Synonyms:

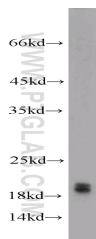
SNCA; Alpha synuclein, NACP, PARK1, PARK4, PD1, SNCA



Immunohistochemical of paraffin-embedded human brain using 10842-1-AP (SNCA antibody) at dilution of 1:50 (under 10x lens)



Immunohistochemical of paraffin-embedded human brain using 10842-1-AP (SNCA antibody) at dilution of 1:50 (under 40x lens)



mouse brain tissue were subjected to SDS PAGE followed by western blot with 10842-1-AP (SNCA antibody) at dilution of 1:1000

Background

SNCA, also named as NACP, PARK1 and Alpha-synuclein, belongs to the synuclein family. It may be involved in the regulation of dopamine release and transport. SNCA reduces neuronal responsiveness to various apoptotic stimuli, leading to a decreased caspase-3 activation. The deposition of aggregated SNCA is the pathological hallmark of Lewy body disease, which includes Parkinson's disease (PD), diffuse Lewy body disease (DLBD), and Lewy body variant of Alzheimer's disease (LBV). (PMID:21056999) This antibody can recognize all the isoforms of SNCA.

Applications

Tested applications:	ELISA, IHC, WB, IF
Cited applications:	WB
Species specificity:	Human, Mouse, Rat; other species not tested.
Cited species:	Human, rat
Calculated alpha-synuclein MW:	14 kDa
Observed alpha-synuclein MW:	15-19kd
Positive WB detected in	Mouse brain tissue, human brain tissue, SH-SY5Y cells
Positive IHC detected in	Human brain tissue, human breast cancer tissue, human kidney tissue, human lung tissue, human placenta tissue, human skin tissue, human testis tissue
Positive IF detected in	SH-SY5Y cells
Recommended dilution:	WB: 1:500-1:5000 IHC: 1:20-1:200 IF: 1:10-1:100

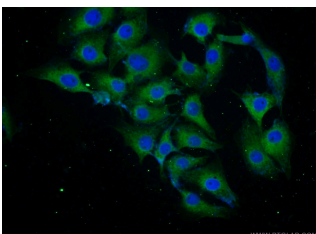
Application key: WB = Western blotting, IHC = Immunohistochemistry, IF = Immunofluorescence, IP = Immunoprecipitation

Immunogen information

Immunogen:	Ag1285
GenBank accession number:	BC013293
Gene ID (NCBI):	6622
Full name:	Synuclein, alpha (non A4 component of amyloid precursor)

Product information

Purification method:	Antigen affinity purification
Storage:	PBS with 0.1% sodium azide and 50% glycerol pH 7.3. Store at -20°C.



**Immunofluorescent analysis
of SH-SY5Y cells using 10842-
1-AP(a-Synuclein Antibody)
at dilution of 1:25 and Alexa
Fluor 488-conjugated
AffiniPure Goat Anti-Rabbit
IgG(H+L)**