

CTRP1 Polyclonal Antibody

Catalog number: 12209-1-AP

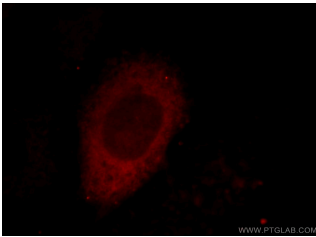
Size: 20 µg/150 µl

Source: Rabbit

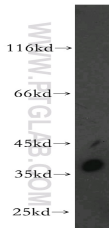
Isotype: IgG

Synonyms:

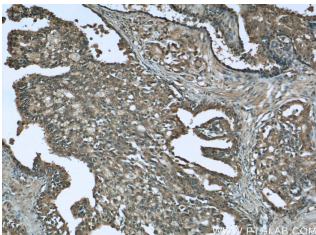
C1QTNF1; C1QTNF1, CTRP1,
FLJ90694, GIP, ZSIG37



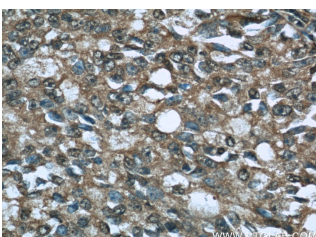
Immunofluorescent analysis of HepG2 cells, using C1QTNF1 antibody 12209-1-AP at 1:25 dilution and Rhodamine-labeled goat anti-rabbit IgG (red).



human testis tissue were subjected to SDS PAGE followed by western blot with 12209-1-AP(C1QTNF1 antibody) at dilution of 1:500



Immunohistochemistry of paraffin-embedded human prostate cancer tissue slide using 12209-1-AP(C1QTNF1 Antibody) at dilution of 1:50 (under 10x lens)



Immunohistochemistry of paraffin-embedded human

Applications

Tested applications:	ELISA, WB, IF, IHC
Species specificity:	Human, Mouse, Rat; other species not tested.
Calculated CTRP1 MW:	281aa, 32 kDa
Observed CTRP1 MW:	35 kDa
Positive WB detected in	Human testis tissue
Positive IHC detected in	Human prostate cancer tissue, human placenta tissue
Positive IF detected in	HepG2 cells
Recommended dilution:	WB: 1:500-1:5000
	IHC: 1:20-1:200
	IF: 1:10-1:100

Application key: WB = Western blotting, IHC = Immunohistochemistry, IF = Immunofluorescence, IP = Immunoprecipitation

Immunogen information

Immunogen:	Ag2854
GenBank accession number:	BC021553
Gene ID (NCBI):	114897
Full name:	C1q and tumor necrosis factor related protein 1

Product information

Purification method:	Antigen affinity purification
Storage:	PBS with 0.02% sodium azide and 50% glycerol pH 7.3. Store at -20°C.

prostate cancer tissue slide
using 12209-1-AP (C1QTNF1
Antibody) at dilution of 1:50
(under 40x lens)