

## SETDB1 Polyclonal Antibody

Catalog number: 11231-1-AP

Size: 45 µg/150 µl

Source: Rabbit

Isotype: IgG

Synonyms:

SETDB1; ESET, H3 K9 HMTase

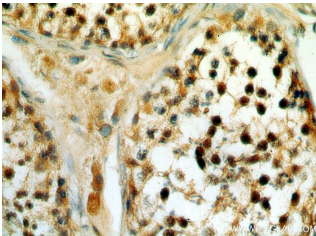
4, H3 K9 HMTase4, KG1T,

KIAA0067, KMT1E, Lysine N

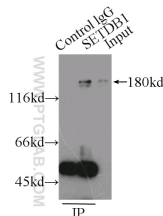
methyltransferase 1E, SET

domain bifurcated 1, SET

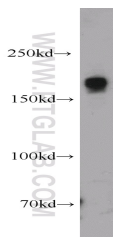
domain, bifurcated 1, SETDB1



Immunohistochemical of paraffin-embedded human testis using 11231-1-AP(SETDB1 antibody) at dilution of 1:50 (under 40x lens)



IP Result of anti-SETDB1 (IP:11231-1-AP, 3µg; Detection:11231-1-AP 1:1000) with MCF-7 cells lysate 2500µg.



MCF7 cells were subjected to SDS PAGE followed by western blot with 11231-1-AP(SETDB1 antibody) at dilution of 1:1000

### Background

SETDB1, also named as ESET, KIAA0067 and KMT1E, belongs to the histone-lysine methyltransferase family. It is a SET domain protein with histone H3-K9-specific methyltransferase activity. H3 'Lys-9' trimethylation is coordinated with DNA methylation and represents a specific tag for epigenetic transcriptional repression by recruiting HP1 (CBX1, CBX3 and/or CBX5) proteins to methylated histones. SETDB1 mainly functions in euchromatin regions, thereby playing a central role in the silencing of euchromatic genes. It probably forms a complex with MBD1 and ATF7IP that represses transcription and couples DNA methylation and histone 'Lys-9' trimethylation. Its activity is dependent on MBD1 and is heritably maintained through DNA replication by being recruited by CAF-1. SETDB1 regulates histone methylation, gene silencing, and transcriptional repression. It has been identified as a target for treatment in Huntington Disease, given that gene silencing and transcription dysfunction likely play a role in the disease pathogenesis. This antibody is a rabbit polyclonal antibody raised against residues near the N terminus of human SETDB1.

### Applications

Tested applications:

ELISA, WB, IHC, IP

Cited applications:

ChIP, IHC, WB

Species specificity:

Human, Mouse, Rat; other species not tested.

Cited species:

Human, mouse

Calculated SETDB1 MW:

143 kDa

Observed SETDB1 MW:

170 kDa

Positive WB detected in

MCF7 cells, HEK-293 cells, human testis tissue, Jurkat cells, mouse brain tissue, PC-3 cells

Positive IP detected in

MCF-7 cells

Positive IHC detected in

Human testis tissue

Recommended dilution:

WB: 1:500-1:5000

IP: 1:500-1:5000

IHC: 1:20-1:200

Application key: WB = Western blotting, IHC = Immunohistochemistry, IF = Immunofluorescence, IP = Immunoprecipitation

### Immunogen information

Immunogen:

Ag1725

GenBank accession number:

BC009362

Gene ID (NCBI):

9869

Full name:

SET domain, bifurcated 1

### Product information

Purification method:

Antigen affinity purification

Storage:

PBS with 0.1% sodium azide and 50% glycerol pH 7.3. Store at -20°C.