

CENPC Polyclonal Antibody

Catalog number: 14250-1-AP

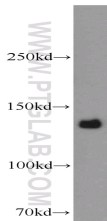
Size: 53 µg/150 µl

Source: Rabbit

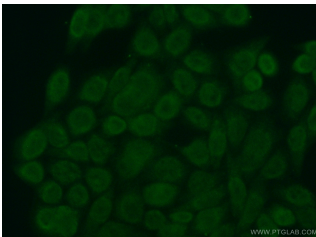
Isotype: IgG

Synonyms:

CENPC1; CENP C, CENP C 1,
CENPC, CENPC1, Centromere
autoantigen C, centromere
protein C 1, hcp 4, ICEN7, MIF2



HeLa cells were subjected to SDS PAGE followed by western blot with 14250-1-AP(CENPC1 antibody) at dilution of 1:800



Immunofluorescent analysis of (10% Formaldehyde) fixed HeLa cells using 14250-1-AP(CENPC1 Antibody) at dilution of 1:50 and Alexa Fluor 488-conjugated AffiniPure Goat Anti-Rabbit IgG(H+L)

Applications

Tested applications:	ELISA, WB, IF
Species specificity:	Human, Mouse; other species not tested.
Calculated CENPC MW:	107 kDa
Observed CENPC MW:	140 kDa
Positive WB detected in	HeLa cells, A431 cells, Jurkat cells
Positive IF detected in	HeLa cells
Recommended dilution:	WB: 1:200-1:2000 IF: 1:50-1:500

Application key: WB = Western blotting, IHC = Immunohistochemistry, IF = Immunofluorescence, IP = Immunoprecipitation

Immunogen information

Immunogen:	Ag5523
GenBank accession number:	BC041117
Gene ID (NCBI):	1060
Full name:	Centromere protein C 1

Product information

Purification method:	Antigen affinity purification
Storage:	PBS with 0.02% sodium azide and 50% glycerol pH 7.3. Store at -20°C.