

TSP50 Polyclonal Antibody

Catalog number: 12574-1-AP

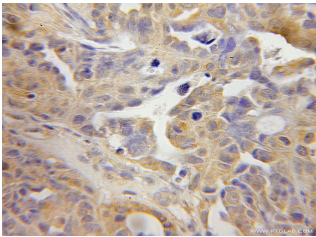
Size: 40 µg/150 µl

Source: Rabbit

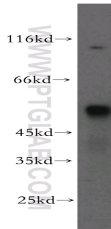
Isotype: IgG

Synonyms:

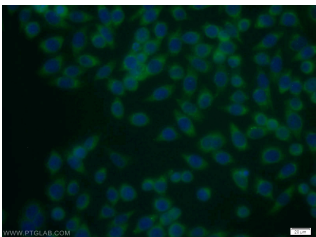
TSP50; Cancer/testis antigen 20, CT20, PRSS50, Serine protease 50, testes protease 50, TSP50



Immunohistochemical of paraffin-embedded human ovary tumor using 12574-1-AP(TSP50 antibody) at dilution of 1:50 (under 10x lens)



MCF7 cells were subjected to SDS PAGE followed by western blot with 12574-1-AP(TSP50 antibody) at dilution of 1:300



Immunofluorescent analysis of MCF-7 cells using 12574-1-AP(TSP50 Antibody) at dilution of 1:25 and Alexa Fluor 488-conjugated AffiniPure Goat Anti-Rabbit IgG(H+L)

Background

TSP50 (Testis-specific protease-like protein 50) is also named as PRSS50, CT20 and belongs to the peptidase S1 family. It can enhance the expression of NFKB target genes involved in cell proliferation, and promotes cell proliferation, at least partially, through activation of the NFKB signalling pathway(PMID:21385156). There are two protein bands of 37 kDa and 43 kDa to be detected in human testes that the difference is most likely caused by posttranslational proteolytic cleavage(PMID:11782390). The full length protein has a signal peptide with 39 amino acids and two glycosylation sites.

Applications

Tested applications:	ELISA, WB, IHC, IF
Cited applications:	IHC, WB
Species specificity:	Human, Mouse; other species not tested.
Cited species:	Human
Calculated TSP50 MW:	385aa,43 kDa
Observed TSP50 MW:	50-55 kDa
Positive WB detected in	MCF7 cells, HEK-293 cells, human testis tissue, mouse testis tissue
Positive IHC detected in	Human ovary tumor tissue, human breast cancer tissue, human testis tissue
Positive IF detected in	MCF-7 cells
Recommended dilution:	WB: 1:500-1:5000 IHC: 1:20-1:200 IF: 1:10-1:100

Application key: WB = Western blotting, IHC = Immunohistochemistry, IF = Immunofluorescence, IP = Immunoprecipitation

Immunogen information

Immunogen:	Ag3247
GenBank accession number:	BC033016
Gene ID (NCBI):	29122
Full name:	Testes-specific protease 50

Product information

Purification method:	Antigen affinity purification
Storage:	PBS with 0.02% sodium azide and 50% glycerol pH 7.3. Store at -20°C.