

## SCIN Polyclonal Antibody

Catalog number: 11579-1-AP

Size: 35 µg/150 µl

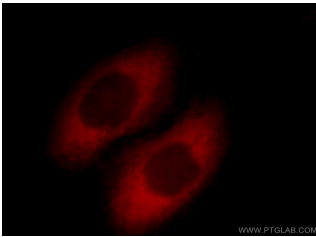
Source: Rabbit

Isotype: IgG

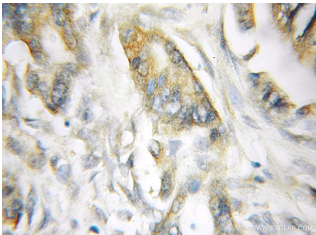
Synonyms:

SCIN; Adseverin, KIAA1905,

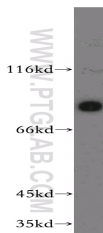
SCIN, scinderin



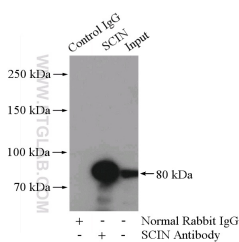
Immunofluorescent analysis of HepG2 cells, using SCIN antibody 11579-1-AP at 1:25 dilution and Rhodamine-labeled goat anti-rabbit IgG (red).



Immunohistochemical of paraffin-embedded human pancreas cancer using 11579-1-AP(SCIN antibody) at dilution of 1:50 (under 10x lens)



human placenta tissue were subjected to SDS PAGE followed by western blot with 11579-1-AP(SCIN antibody) at dilution of 1:300



IP Result of anti-SCIN

(IP:11579-1-AP, 4ug;

Detection:11579-1-AP 1:300)

### Applications

Tested applications:	ELISA, WB, IHC, IF, IP
Species specificity:	Human, Mouse, Rat; other species not tested.
Calculated SCIN MW:	715aa, 81 kDa
Observed SCIN MW:	80 kDa
Positive WB detected in	Human placenta tissue
Positive IP detected in	Human placenta tissue
Positive IHC detected in	Human pancreas cancer tissue
Positive IF detected in	HepG2 cells
Recommended dilution:	WB: 1:500-1:5000
	IP: 1:200-1:1000
	IHC: 1:20-1:200
	IF: 1:10-1:100

Application key: WB = Western blotting, IHC = Immunohistochemistry, IF = Immunofluorescence, IP = Immunoprecipitation

### Immunogen information

Immunogen:	Ag2168
GenBank accession number:	BC021090
Gene ID (NCBI):	85477
Full name:	Scinderin

### Product information

Purification method:	Antigen affinity purification
Storage:	PBS with 0.02% sodium azide and 50% glycerol pH 7.3. Store at -20°C.

with human placenta tissue  
lysate 2800ug.