

## CAT-1 Polyclonal Antibody

Catalog number: 14195-1-AP

Size: 49 µg/150 µl

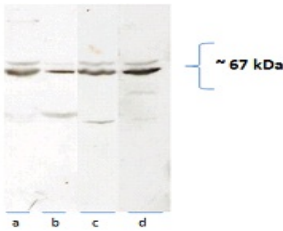
Source: Rabbit

Isotype: IgG

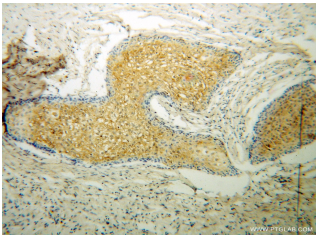
Synonyms:

SLC7A1; ATRC1, CAT 1, CAT1,

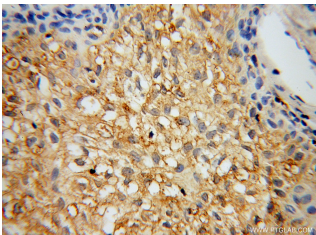
HCA1, REC1L, SLC7A1



WB result of 14195-1-AP from Dilwar in Rat tissue. Rat brain (a), heart (b) liver (c) mitochondria and liver homogenate (d), (40 µg with 10% PAGE) probed with 1:1000 dilution.



Immunohistochemical of paraffin-embedded human osteosarcoma using 14195-1-AP (SLC7A1 antibody) at dilution of 1:100 (under 10x lens)



Immunohistochemical of paraffin-embedded human osteosarcoma using 14195-1-AP (SLC7A1 antibody) at dilution of 1:100 (under 40x lens)

### Applications

Tested applications:	ELISA, IHC, WB
Cited applications:	IHC, WB
Species specificity:	Human, Mouse, Rat; other species not tested.
Cited species:	Human, mouse, rat
Calculated CAT-1 MW:	68kd
Observed CAT-1 MW:	67-70kd
Positive WB detected in	Rat brain/liver tissue, HepG2 cells, Jurkat cells, mouse heart tissue, mouse liver tissue
Positive IHC detected in	Human osteosarcoma tissue
Recommended dilution:	WB: 1:500-1:5000 IHC: 1:20-1:200

Application key: WB = Western blotting, IHC = Immunohistochemistry, IF = Immunofluorescence, IP = Immunoprecipitation

### Immunogen information

Immunogen:	Ag5398
GenBank accession number:	BC063303
Gene ID (NCBI):	6541
Full name:	Solute carrier family 7 (cationic amino acid transporter, y+ system), member 1

### Product information

Purification method:	Antigen affinity purification
Storage:	PBS with 0.02% sodium azide and 50% glycerol pH 7.3. Store at -20°C.