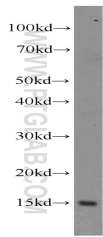
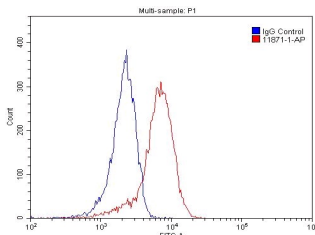


SH2D1B Polyclonal Antibody

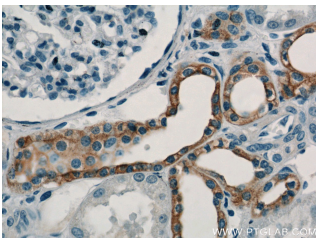
Catalog number: 11871-1-AP
Size: 55 µg/150 µl
Source: Rabbit
Isotype: IgG
Synonyms:
SH2D1B; EAT 2, EAT2, SH2 domain containing 1B, SH2D1B



Jurkat cells were subjected to SDS PAGE followed by western blot with 11871-1-AP (SH2D1B antibody) at dilution of 1:800



1X10⁶ Jurkat cells were stained with 0.2µg SH2D1B antibody (11871-1-AP, red) and control antibody (blue). Fixed with 4% PFA blocked with 3% BSA (30 min). Alexa Fluor 488-conjugated AffiniPure Goat Anti-Rabbit IgG(H+L) with dilution 1:1500.



Immunohistochemistry of paraffin-embedded human kidney tissue slide using 11871-1-AP (SH2D1B Antibody) at dilution of 1:50 (under 40x lens)

Background

SH2D1B, also named as EAT2, an adaptor expressed in innate immune cells, including natural killer (NK) cells. It plays a role in controlling signal transduction through at least four receptors, CD84, SLAMF1, LY9 and CD244, expressed on the surface of professional antigen-presenting cells. EAT-2 overexpression would enhance the innate immune responses and also result in more potent Carcinoembryonic antigen-specific adaptive immune responses.

Applications

Tested applications:	ELISA, WB, IHC, FC
Cited applications:	FC, WB
Species specificity:	Human, Mouse, Rat; other species not tested.
Cited species:	Human
Calculated SH2D1B MW:	132aa, 15 kDa
Observed SH2D1B MW:	15 kDa
Positive WB detected in	Jurkat cells, HepG2 cells, HL-60 cells, mouse thymus tissue, Raji cells
Positive IHC detected in	Human kidney tissue
Positive FC detected in	Jurkat cells
Recommended dilution:	WB: 1:200-1:2000 IHC: 1:20-1:200 FC: N/A

Application key: WB = Western blotting, IHC = Immunohistochemistry, IF = Immunofluorescence, IP = Immunoprecipitation

Immunogen information

Immunogen:	Ag2454
GenBank accession number:	BC022407
Gene ID (NCBI):	117157
Full name:	SH2 domain containing 1B

Product information

Purification method:	Antigen affinity purification
Storage:	PBS with 0.02% sodium azide and 50% glycerol pH 7.3. Store at -20°C.