

## SDCCAG1 Polyclonal Antibody

Catalog number: 11840-1-AP

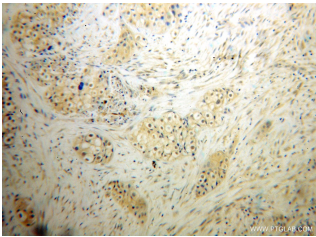
Size: 43 µg/150 µl

Source: Rabbit

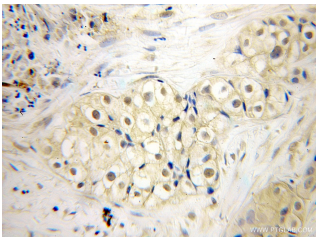
Isotype: IgG

Synonyms:

SDCCAG1; FLJ10051, NY CO 1,  
SDCCAG1



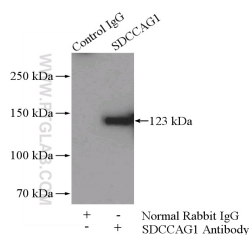
Immunohistochemical of paraffin-embedded human lung cancer using 11840-1-AP(SDCCAG1 antibody) at dilution of 1:50 (under 10x lens)



Immunohistochemical of paraffin-embedded human lung cancer using 11840-1-AP(SDCCAG1 antibody) at dilution of 1:50 (under 40x lens)



A549 cells were subjected to SDS PAGE followed by western blot with 11840-1-AP(SDCCAG1 antibody) at dilution of 1:500



**IP Result of anti-SDCCAG1**

(IP:11840-1-AP, 4µg;

Detection:11840-1-AP 1:500)

### Applications

Tested applications:	ELISA, WB, IHC, IP
Species specificity:	Human, Mouse, Rat; other species not tested.
Calculated SDCCAG1 MW:	1076aa, 123 kDa
Observed SDCCAG1 MW:	123kd
Positive WB detected in:	A549 cells, HEK-293 cells
Positive IP detected in:	A549 cells
Positive IHC detected in:	Human lung cancer tissue
Recommended dilution:	WB: 1:200-1:2000 IP: 1:200-1:2000 IHC: 1:20-1:200

Application key: WB = Western blotting, IHC = Immunohistochemistry, IF = Immunofluorescence, IP = Immunoprecipitation

### Immunogen information

Immunogen:	Ag2467
GenBank accession number:	BC020794
Gene ID (NCBI):	9147
Full name:	Serologically defined colon cancer antigen 1

### Product information

Purification method:	Antigen affinity purification
Storage:	PBS with 0.1% sodium azide and 50% glycerol pH 7.3. Store at -20°C.

with A549 cells lysate 1800ug.