

XLF Polyclonal Antibody

Catalog number: 11888-1-AP

Size: 20 µg/150 µl

Source: Rabbit

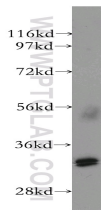
Isotype: IgG

Synonyms:

NHEJ1; FLJ12610, NHEJ1,

Protein cernunnos, XLF, XRCC4

like factor



human small intestine tissue were subjected to SDS PAGE followed by western blot with 11888-1-AP(NHEJ1 antibody) at dilution of 1:300

Applications

| | |
|-------------------------|----------------------------------|
| Tested applications: | ELISA, WB |
| Cited applications: | WB |
| Species specificity: | Human; other species not tested. |
| Cited species: | Human |
| Calculated XLF MW: | 299aa,33 kDa |
| Observed XLF MW: | 33kd |
| Positive WB detected in | Human small intestine tissue |
| Recommended dilution: | WB: 1:200-1:2000 |

Application key: WB = Western blotting, IHC = Immunohistochemistry, IF = Immunofluorescence, IP = Immunoprecipitation

Immunogen information

| | |
|---------------------------|------------------------------------|
| Immunogen: | Ag2496 |
| GenBank accession number: | BC030986 |
| Gene ID (NCBI): | 79840 |
| Full name: | Nonhomologous end-joining factor 1 |

Product information

| | |
|----------------------|---|
| Purification method: | Antigen affinity purification |
| Storage: | PBS with 0.1% sodium azide and 50% glycerol pH 7.3. Store at -20°C. |