

## PLRG1 Polyclonal Antibody

**Catalog number:** 11914-1-AP

**Size:** 42 µg/150 µl

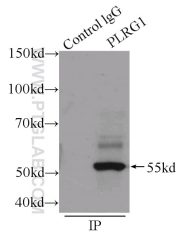
**Source:** Rabbit

**Isotype:** IgG

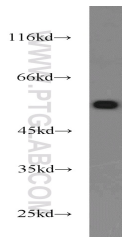
**Synonyms:**

**PLRG1; Pleiotropic regulator 1,**

**PLRG1, PRL1**



**IP Result of anti-PLRG1 (IP:11914-1-AP, 4µg; Detection:11914-1-AP 1:1000) with HEK-293 cells lysate 1400µg.**



**K-562 cells were subjected to SDS PAGE followed by western blot with 11914-1-AP (PLRG1 antibody) at dilution of 1:1000**

### Background

PLRG1, identified as a component of the CDC5L complex, is one spliceosomal protein highly conserved across species. It has been shown to be essential for pre-mRNA splicing in yeast and humans.

### Applications

<b>Tested applications:</b>	ELISA, WB, IP
<b>Species specificity:</b>	Human; other species not tested.
<b>Calculated PLRG1 MW:</b>	514aa, 57 kDa
<b>Observed PLRG1 MW:</b>	55-60kd
<b>Positive WB detected in</b>	K-562 cells, BxPC-3 cells, HEK-293 cells
<b>Positive IP detected in</b>	HEK-293 cells
<b>Recommended dilution:</b>	WB: 1:500-1:5000 IP: 1:500-1:5000

Application key: WB = Western blotting, IHC = Immunohistochemistry, IF = Immunofluorescence, IP = Immunoprecipitation

### Immunogen information

<b>Immunogen:</b>	Ag2527
<b>GenBank accession number:</b>	BC020786
<b>Gene ID (NCBI):</b>	5356
<b>Full name:</b>	Pleiotropic regulator 1 (PRL1 homolog, Arabidopsis)

### Product information

<b>Purification method:</b>	Antigen affinity purification
<b>Storage:</b>	PBS with 0.1% sodium azide and 50% glycerol pH 7.3. Store at -20°C.