

HSP90 Polyclonal Antibody

Catalog number: 13171-1-AP

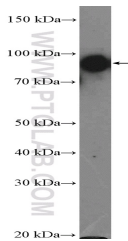
Size: 24 µg/150 µl

Source: Rabbit

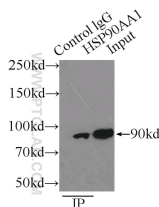
Isotype: IgG

Synonyms:

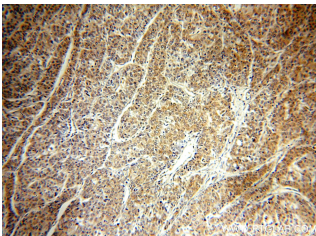
HSP90AA1; FLJ31884, Heat shock 86 kDa, HSP 86, HSP86, Hsp89, HSP89A, HSP90, HSP90A, HSP90AA1, HSP90N, HSPC1, HSPCA, HSPCAL1, HSPCAL4, HSPN, LAP2



HeLa cells were subjected to SDS PAGE followed by western blot with 13171-1-AP(HSP90 Antibody) at dilution of 1:3000



IP Result of anti-HSP90 (IP:13171-1-AP, 3µg; Detection:13171-1-AP 1:500) with K-562 cells lysate 2000µg.



Immunohistochemical of paraffin-embedded human liver cancer using 13171-1-AP(HSP90 antibody) at dilution of 1:50 (under 10x lens)

Background

HSP90, encoded by HSP90AA1, is a constitutively and ubiquitously expressed molecular chaperone that is crucial for the stability and function of many proteins. HSP90 provides chaperoning activity for client proteins; many of them are members of oncogenic pathways, indicating its implication in tumor malignancy. HSP90 mainly resides in the cytosol, while it can also be released to the extracellular space. Secreted Hsp90 is a C-terminal truncated form. It has been reported that the level of plasma Hsp90 is positively correlated with tumor malignancy in clinical cancer patients, and can be a promising diagnostic marker for tumor malignancy in clinical application.

Applications

Tested applications:	ELISA, IF, IHC, IP, FC, WB
Cited applications:	ELISA, WB
Species specificity:	Human, Mouse, Rat; other species not tested.
Cited species:	Human, mouse
Calculated HSP90 MW:	853aa, 90 kDa
Observed HSP90 MW:	90 kDa
Positive WB detected in	HeLa cells, C6 cells, HEK-293 cells, human liver tissue, K-562 cells, rat brain tissue, Y79 cells
Positive IP detected in	K-562 cells, HeLa cells
Positive IHC detected in	Human liver cancer tissue
Positive IF detected in	HepG2 cells
Positive FC detected in	HeLa cells
Recommended dilution:	WB: 1:1000-1:10000 IP: 1:200-1:2000 IHC: 1:20-1:200 IF: 1:10-1:100 FC: N/A

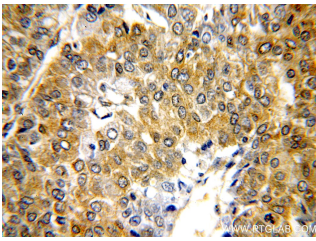
Application key: WB = Western blotting, IHC = Immunohistochemistry, IF = Immunofluorescence, IP = Immunoprecipitation

Immunogen information

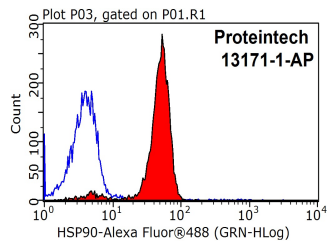
Immunogen:	Ag3826
GenBank accession number:	BC023006
Gene ID (NCBI):	3320
Full name:	Heat shock protein 90kDa alpha (cytosolic), class A member 1

Product information

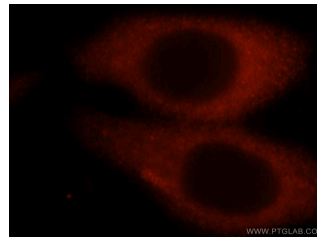
Purification method:	Antigen affinity purification
Storage:	PBS with 0.02% sodium azide and 50% glycerol pH 7.3. Store at -20°C.



Immunohistochemical of paraffin-embedded human liver cancer using 13171-1-AP(HSP90 antibody) at dilution of 1:50 (under 40x lens)



1X10⁶ HeLa cells were stained with 0.2ug HSP90 antibody (13171-1-AP, red) and control antibody (blue). Fixed with 90% MeOH blocked with 3% BSA (30 min). Alexa Fluor 488-conjugated AffiniPure Goat Anti-Rabbit IgG(H+L) with dilution 1:1500.



Immunofluorescent analysis of HepG2 cells, using HSP90AA1 antibody 13171-1-AP at 1:25 dilution and Rhodamine-labeled goat anti-rabbit IgG (red).