

RASGEF1B Polyclonal Antibody

Catalog number: 13617-1-AP

Size: 24 µg/150 µl

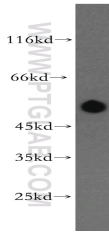
Source: Rabbit

Isotype: IgG

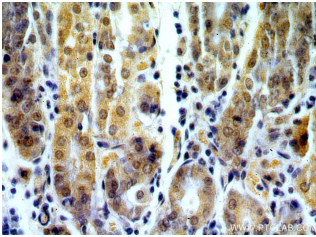
Synonyms:

RASGEF1B; FLJ31695; GPIG4;

MGC46251



human brain tissue were subjected to SDS PAGE followed by western blot with 13617-1-AP(RASGEF1B Antibody) at dilution of 1:600



Immunohistochemistry of paraffin-embedded human stomach using 13617-1-AP(RASGEF1B Antibody) at Dilution 1:50 (under 40x lens)

Applications

Tested applications:	ELISA, WB, IHC
Species specificity:	Human, mouse, rat; other species not tested.
Positive WB detected in:	Human brain tissue, mouse lung tissue, mouse ovary tissue
Calculated RASGEF1B MW:	210aa,24kd
Observed RASGEF1B MW:	50kd
Positive IHC detected in:	Human stomach
Recommended dilution:	WB: 1:200-1:2000 IHC: 1:20-1:200

Application key: WB = Western blotting, IHC = Immunohistochemistry, IF = Immunofluorescence, IP = Immunoprecipitation, FC = Flow cytometry

Immunogen information

Immunogen:	Ag4525
GenBank accession number:	BC036784
Gene ID (NCBI):	153020
Full name:	RasGEF domain family, member 1B

Product information

Purification method:	Antigen affinity purification
Storage:	PBS with 0.02% sodium azide and 50% glycerol pH 7.3. Store at -20°C.