

TAF1C Polyclonal Antibody

Catalog number: 13341-1-AP

Size: 20 µg/150 µl

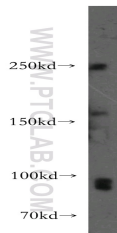
Source: Rabbit

Isotype: IgG

Synonyms:

TAF1C; MGC:39976; SL1;

TAFI110; TAFI95



HT-1080 cells were subjected to SDS PAGE followed by western blot with 13341-1-AP(TAF1C Antibody) at dilution of 1:800

Applications

Tested applications:	ELISA, WB
Species specificity:	Human; other species not tested.
Positive WB detected in:	HT-1080 cells
Calculated TAF1C MW:	869aa,95kd
Observed TAF1C MW:	95kd
Recommended dilution:	WB: 1:200-1:2000

Application key: WB = Western blotting, IHC = Immunohistochemistry, IF = Immunofluorescence, IP = Immunoprecipitation, FC = Flow cytometry

Immunogen information

Immunogen:	Ag4164
GenBank accession number:	BC028131
Gene ID (NCBI):	9013
Full name:	TATA box binding protein (TBP)-associated factor, RNA polymerase I, C, 110kDa

Product information

Purification method:	Antigen affinity purification
Storage:	PBS with 0.02% sodium azide and 50% glycerol pH 7.3. Store at -20°C.